

bs-14159R

[Primary Antibody]

CYP4F22 Rabbit pAb

Bioss
ANTIBODIES

www.bioss.com.cn

sales@bioss.com.cn

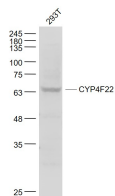
techsupport@bioss.com.cn

400-901-9800

— DATASHEET —

Host: Rabbit	Isotype: IgG	Applications: WB (1:500-2000)
Clonality: Polyclonal		
GeneID: 126410	SWISS: Q6NT55	
Target: CYP4F22		
Immunogen: KLH conjugated synthetic peptide derived from human CYP4F22: 451-531/531.		
Purification: affinity purified by Protein A		Reactivity: Human (predicted: Mouse, Rat, Rabbit, Sheep, Cow, Dog)
Concentration: 1mg/ml		Predicted MW.: 62 kDa
Storage: 0.01M TBS (pH7.4) with 1% BSA, 0.02% Proclin300 and 50% Glycerol. Shipped at 4°C. Store at -20°C for one year. Avoid repeated freeze/thaw cycles.		Subcellular Location: Cytoplasm
Background: This gene encodes a member of the cytochrome P450 superfamily of enzymes. The cytochrome P450 proteins are monooxygenases which catalyze many reactions involved in drug metabolism and synthesis of cholesterol, steroids and other lipids. This gene is part of a cluster of cytochrome P450 genes on chromosome 19 and encodes an enzyme thought to play a role in the 12(R)-lipoxygenase pathway. Mutations in this gene are the cause of ichthyosis lamellar type 3. [provided by RefSeq, Jul 2008]		

— VALIDATION IMAGES —



Sample: 293T(Human) Cell Lysate at 30 ug
Primary: Anti- CYP4F22 (bs-14159R) at 1/1000
dilution Secondary: IRDye800CW Goat Anti-
Rabbit IgG at 1/20000 dilution Predicted band
size: 62 kD Observed band size: 63 kD