

bs-24898R**[Primary Antibody]****MCT4/SLC16A3 Rabbit pAb****Bioss**
ANTIBODIES

www.bioss.com.cn

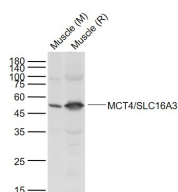
sales@bioss.com.cn

techsupport@bioss.com.cn

400-901-9800

— DATASHEET —

Host: Rabbit	Isotype: IgG	Applications: WB (1:500-2000)
Clonality: Polyclonal		Reactivity: Mouse, Rat (predicted: Human, Rabbit, Cow, Horse)
GeneID: 9123	SWISS: O15427	Predicted MW.: 52 kDa
Target: MCT4/SLC16A3		Subcellular Location: Cell membrane
Immunogen: KLH conjugated synthetic peptide derived from human MCT4/SLC16A3: 401-465/465. < Cytoplasmic >		
Purification: affinity purified by Protein A		
Concentration: 1mg/ml		
Storage: 0.01M TBS (pH7.4) with 1% BSA, 0.02% Proclin300 and 50% Glycerol. Shipped at 4°C. Store at -20°C for one year. Avoid repeated freeze/thaw cycles.		
Background: Lactic acid and pyruvate transport across plasma membranes is catalyzed by members of the proton-linked monocarboxylate transporter (MCT) family, which has been designated solute carrier family-16. Each MCT appears to have slightly different substrate and inhibitor specificities and transport kinetics, which are related to the metabolic requirements of the tissues in which it is found. The MCTs, which include MCT1 (SLC16A1; MIM 600682) and MCT2 (SLC16A7; MIM 603654), are characterized by 12 predicted transmembrane domains (Price et al., 1998 [PubMed 9425115]).[supplied by OMIM, Mar 2008]		

— VALIDATION IMAGES —

Sample: Lane 1: Mouse Muscle tissue lysates
Lane 2: Rat Muscle tissue lysates Primary: Anti-MCT4/SLC16A3 (bs-24898R) at 1/1000 dilution
Secondary: IRDye800CW Goat Anti-Rabbit IgG at 1/20000 dilution Predicted band size: 52 kD
Observed band size: 50 kD