

bs-20729R**[Primary Antibody]****DRD2 Rabbit pAb****Bioss**
ANTIBODIES

www.bioss.com.cn

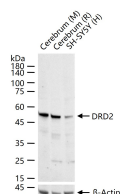
sales@bioss.com.cn

techsupport@bioss.com.cn

400-901-9800

— DATASHEET —

Host: Rabbit	Isotype: IgG	Applications: WB (1:500-2000) ELISA (1:5000-10000)
Clonality: Polyclonal		
GeneID: 1813	SWISS: P14416	Reactivity: Human, Mouse, Rat (predicted: Rabbit, Sheep, Cow, Dog, Horse)
Target: DRD2		Predicted MW.: 51 kDa
Immunogen: KLH conjugated synthetic peptide derived from human DRD2: 1-100/443. < Extracellular >		Subcellular Location: Cell membrane ,Cytoplasm
Purification: affinity purified by Protein A		
Concentration: 1mg/ml		
Storage: 0.01M TBS (pH7.4) with 1% BSA, 0.02% Proclin300 and 50% Glycerol. Shipped at 4°C. Store at -20°C for one year. Avoid repeated freeze/thaw cycles.		
Background: This gene encodes the D2 subtype of the dopamine receptor. This G-protein coupled receptor inhibits adenylyl cyclase activity. A missense mutation in this gene causes myoclonus dystonia; other mutations have been associated with schizophrenia. Alternative splicing of this gene results in two transcript variants encoding different isoforms. A third variant has been described, but it has not been determined whether this form is normal or due to aberrant splicing. [provided by RefSeq, Jul 2008]		

— VALIDATION IMAGES —

25 ug total protein per lane of various lysates
(see on figure) probed with DRD2 polyclonal
antibody, unconjugated (bs-20729R) at 1:1000
dilution and 4°C overnight incubation. Followed
by conjugated secondary antibody incubation at
r.t. for 60 min.