

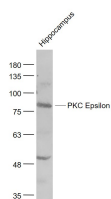
bs-23311R**[Primary Antibody]****PKC Epsilon Rabbit pAb****Bioss**
ANTIBODIES

www.bioss.com.cn

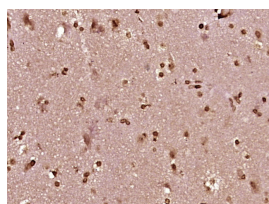
sales@bioss.com.cn

techsupport@bioss.com.cn

400-901-9800

— DATASHEET —**Host:** Rabbit**Isotype:** IgG**Clonality:** Polyclonal**GeneID:** 5581**SWISS:** Q02156**Target:** PKC Epsilon**Immunogen:** KLH conjugated synthetic peptide derived from human PKC Epsilon: 691-737/737.**Purification:** affinity purified by Protein A**Concentration:** 1mg/ml**Storage:** 0.01M TBS (pH7.4) with 1% BSA, 0.02% Proclin300 and 50% Glycerol.
Shipped at 4°C. Store at -20°C for one year. Avoid repeated freeze/thaw cycles.**Background:** Protein kinase C (PKC) is a family of serine- and threonine-specific protein kinases that can be activated by calcium and the second messenger diacylglycerol. PKC family members phosphorylate a wide variety of protein targets and are known to be involved in diverse cellular signaling pathways. PKC family members also serve as major receptors for phorbol esters, a class of tumor promoters. Each member of the PKC family has a specific expression profile and is believed to play a distinct role in cells. The protein encoded by this gene is one of the PKC family members. This kinase has been shown to be involved in many different cellular functions, such as neuron channel activation, apoptosis, cardioprotection from ischemia, heat shock response, as well as insulin exocytosis. Knockout studies in mice suggest that this kinase is important for lipopolysaccharide (LPS)-mediated signaling in activated macrophages and may also play a role in controlling anxiety-like behavior. [provided by RefSeq, Jul 2008].**Applications:** **WB** (1:500-2000)**IHC-P** (1:100-500)**IHC-F** (1:100-500)**IF** (1:100-500)**Reactivity:** Human, Mouse
(predicted: Rat, Rabbit, Pig, Sheep, Cow, Chicken, Dog, Horse)**Predicted MW.:** 84 kDa**Subcellular Location:** Cell membrane ,Cytoplasm ,Nucleus**— VALIDATION IMAGES —**

Sample: Hippocampus (Mouse) Lysate at 40 ug
 Primary: Anti- PKC Epsilon (bs-23311R) at 1/1000
 dilution Secondary: IRDye800CW Goat Anti-
 Rabbit IgG at 1/20000 dilution Predicted band
 size: 84 kD Observed band size: 84 kD



Paraformaldehyde-fixed, paraffin embedded
 (human brain glioma); Antigen retrieval by
 boiling in sodium citrate buffer (pH6.0) for
 15min; Block endogenous peroxidase by 3%
 hydrogen peroxide for 20 minutes; Blocking
 buffer (normal goat serum) at 37°C for 30min;
 Antibody incubation with (PKC Epsilon)
 Polyclonal Antibody, Unconjugated (bs-23311R)
 at 1:400 overnight at 4°C, followed by operating
 according to SP Kit(Rabbit) (sp-0023)
 instructions and DAB staining.