

bs-23309R

[Primary Antibody]

EAAT1 Rabbit pAb

BioSS
ANTIBODIES

www.bioss.com.cn

sales@bioss.com.cn

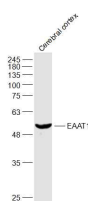
techsupport@bioss.com.cn

400-901-9800

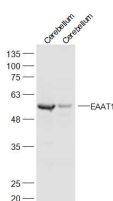
— DATASHEET —

Host: Rabbit	Isotype: IgG	Applications: WB (1:500-2000)
Clonality: Polyclonal		Reactivity: Human, Mouse, Rat (predicted: Pig, Sheep, Cow, Horse)
GeneID: 6507	SWISS: P43003	Predicted MW.: 60 kDa
Target: EAAT1		Subcellular Location: Cell membrane
Immunogen: KLH conjugated synthetic peptide derived from human EAAT1: 441-512/512.		
Purification: affinity purified by Protein A		
Concentration: 1mg/ml		
Storage: 0.01M TBS (pH7.4) with 1% BSA, 0.02% Proclin300 and 50% Glycerol. Shipped at 4°C. Store at -20°C for one year. Avoid repeated freeze/thaw cycles.		
Background: This gene encodes a member of a member of a high affinity glutamate transporter family. This gene functions in the termination of excitatory neurotransmission in central nervous system. Mutations are associated with episodic ataxia, Type 6. Alternative splicing results in multiple transcript variants.[provided by RefSeq, Feb 2014]		

— VALIDATION IMAGES —



Sample: Cerebral cortex (Mouse) Lysate at 40 ug
Primary: Anti-EAAT1 (bs-23309R) at 1/1000
dilution Secondary: IRDye800CW Goat Anti-Rabbit IgG at 1/20000 dilution Predicted band size: 60 kD Observed band size: 55 kD



Sample: Cerebellum (Mouse) Lysate at 40 ug
Cerebellum (Rat) Lysate at 40 ug Primary: Anti-EAAT1 (bs-23309R) at 1/300 dilution Secondary: IRDye800CW Goat Anti-Rabbit IgG at 1/20000 dilution Predicted band size: 60 kD Observed band size: 55 kD