

bs-15136R**[Primary Antibody]****C22orf32 Rabbit pAb****BioSS**
ANTIBODIES

www.bioss.com.cn

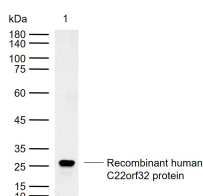
sales@bioss.com.cn

techsupport@bioss.com.cn

400-901-9800

— DATASHEET —

Host: Rabbit	Isotype: IgG	Applications: WB (1:500-2000)
Clonality: Polyclonal		Reactivity: Human (predicted: Mouse, Rat, Sheep, Cow, Dog, Horse)
GeneID: 91689	SWISS: Q9H4I9	Predicted MW.: 7 kDa
Target: C22orf32		Subcellular Location: Cell membrane
Immunogen: KLH conjugated synthetic peptide derived from human C22orf32: 1-60/107.		
Purification: affinity purified by Protein A		
Concentration: 1mg/ml		
Storage: 0.01M TBS (pH7.4) with 1% BSA, 0.02% Proclin300 and 50% Glycerol. Shipped at 4°C. Store at -20°C for one year. Avoid repeated freeze/thaw cycles.		
Background: Chromosome 22 contains over 500 genes and about 49 million bases. Being the second smallest human chromosome, 22 contains a surprising variety of interesting genes. Phelan-McDermid syndrome, Neurofibromatosis type 2 and autism are associated with chromosome 22. A schizophrenia susceptibility locus has been identified on chromosome 22 and studies show that 22q11 deletion symptoms include a high incidence of schizophrenia. Translocations between chromosomes 9 and 22 may lead to the formation of the Philadelphia Chromosome and the subsequent production of the novel fusion protein, BCR-Abl, a potent cell proliferation activator found in several types of leukemia. The C22orf32 gene product has been provisionally designated C22orf32 pending further characterization		

— VALIDATION IMAGES —

Sample: Lane 1: Recombinant human C22orf32

protein, N-Trx-His(bs-42185P) Primary: Anti-

C22orf32 (bs-15136R) at 1/1000 dilution

Secondary: IRDye800CW Goat Anti-Rabbit IgG at

1/20000 dilution Predicted band size: 7 kDa

Observed band size: 27 kDa