

bs-2532R**[Primary Antibody]****BioSS**
ANTIBODIES

www.bioss.com.cn

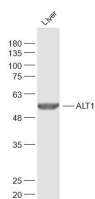
sales@bioss.com.cn

techsupport@bioss.com.cn

400-901-9800

ALT1 Rabbit pAb**— DATASHEET —**

Host: Rabbit	Isotype: IgG	Applications: WB (1:500-2000)
Clonality: Polyclonal		Reactivity: Mouse (predicted: Human, Rat, Pig, Cow)
GeneID: 2875	SWISS: P24298	
Target: ALT1		Predicted MW.: 55 kDa
Immunogen: KLH conjugated synthetic peptide derived from human ALT1: 301-400/496.		Subcellular Location: Cytoplasm
Purification: affinity purified by Protein A		
Concentration: 1mg/ml		
Storage: 0.01M TBS (pH7.4) with 1% BSA, 0.02% Proclin300 and 50% Glycerol. Shipped at 4°C. Store at -20°C for one year. Avoid repeated freeze/thaw cycles.		
Background: Alanine Transaminase [glutamic pyruvate transaminase - GPT] participates in cellular nitrogen metabolism and also in liver gluconeogenesis starting with precursors transported from skeletal muscles. Pyridoxal phosphate is a known cofactor. Expression is induced by glucocorticoids. This enzyme is present in a high concentration in liver tissue and it's release into the blood indicates liver disease or damage.		

— VALIDATION IMAGES —

Sample: Liver (Mouse) Lysate at 40 ug Primary:
Anti-ALT1 (bs-2532R) at 1/1000 dilution
Secondary: IRDye800CW Goat Anti-Rabbit IgG at
1/20000 dilution Predicted band size: 55 kD
Observed band size: 55 kD

— SELECTED CITATIONS —

- **[IF=6.1]** Jiangtao Huang, et al. Enhancement of PPAR α -Inhibited Leucine Metabolism-Stimulated β -Casein Synthesis and Fatty Acid Synthesis in Primary Bovine Mammary Epithelial Cells. J AGR FOOD CHEM. 2023;XXXX(XXX):XXX-XXX WB ;Bovine. 37853551