

CD23 Rabbit pAb

Catalog Number: bs-2490R

Target Protein: CD23

Concentration: 1mg/ml

Form: Liquid

Host: Rabbit

Clonality: Polyclonal

Isotype: IgG

Applications: WB (1:500-2000)

Reactivity: Human, Mouse (predicted:Rat, Rabbit, Horse)

Predicted MW: 36 kDa

Entrez Gene: 2208

Swiss Prot: P06734

Source: KLH conjugated synthetic peptide derived from human CD23: 221-321/321.

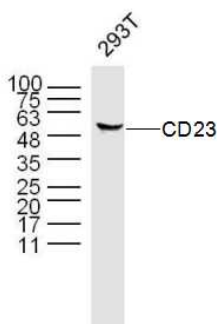
Purification: affinity purified by Protein A

Storage: 0.01M TBS (pH7.4) with 1% BSA, 0.02% Proclin300 and 50% Glycerol.

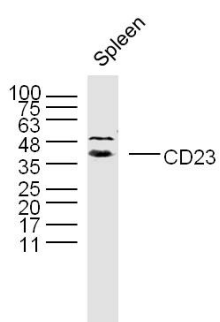
Shipped at 4°C. Store at -20°C for one year. Avoid repeated freeze/thaw cycles.

Background: The protein encoded by this gene is a B-cell specific antigen, and a low-affinity receptor for IgE. It has essential roles in B cell growth and differentiation, and the regulation of IgE production. This protein also exists as a soluble secreted form, then functioning as a potent mitogenic growth factor. Alternatively spliced transcript variants encoding different isoforms have been described for this gene.[provided by RefSeq, Jul 2011]

VALIDATION IMAGES



Sample: 293T Cell (Human) Lysate at 30 ug Primary: Anti- CD23 (bs-2490R) at 1/300 dilution Secondary: IRDye800CW Goat Anti-Rabbit IgG at 1/20000 dilution Predicted band size: 36 kD Observed band size: 50/40 kD



Sample: Spleen (Mouse) Lysate at 40 ug Primary: Anti- CD23 (bs-2490R) at 1/300 dilution Secondary: IRDye800CW Goat Anti-Rabbit IgG at 1/20000 dilution Predicted band size: 36 kD Observed band size: 50/40 kD