

bs-2488R**[Primary Antibody]****CD6 Rabbit pAb****Bioss**
ANTIBODIES

www.bioss.com.cn

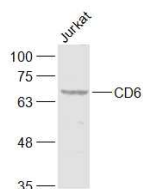
sales@bioss.com.cn

techsupport@bioss.com.cn

400-901-9800

— DATASHEET —

Host: Rabbit	Isotype: IgG	Applications: WB (1:500-2000)
Clonality: Polyclonal		Reactivity: Human, Mouse (predicted: Rat)
GeneID: 923	SWISS: P30203	
Target: CD6		Predicted MW.: 70 kDa
Immunogen: KLH conjugated synthetic peptide derived from human CD6: 251-350/668.		Subcellular Location: Secreted ,Cell membrane
Purification: affinity purified by Protein A		
Concentration: 1mg/ml		
Storage: 0.01M TBS (pH7.4) with 1% BSA, 0.02% Proclin300 and 50% Glycerol. Shipped at 4°C. Store at -20°C for one year. Avoid repeated freeze/thaw cycles.		
Background: CD6 is a type I membrane protein expressed by thymocytes, mature T cells, a subset of B cells known as B1 cells, and some cells in the brain. CD6 is a member of the scavenger receptor cysteine rich (SRCR) family of proteins, which includes the leukocyte antigen CD5. The extracellular domain of CD6 is composed of three SRCR domains and has the same domain organization as CD5. The ligand for CD6 is CD166 also known as activated leukocyte cell adhesion molecule. Through its interaction with CD166 in the thymus, CD6 may have a role in T cell development.		

— VALIDATION IMAGES —

Sample: Jurkat(Human) Cell Lysate at 30 ug
Primary: Anti-CD6 (bs-2488R) at 1/1000 dilution
Secondary: IRDye800CW Goat Anti-Rabbit IgG at 1/20000 dilution Predicted band size: 70 kD
Observed band size: 68 kD