

bs-2486R**[Primary Antibody]****SLAMF9 Rabbit pAb****BioSS**
ANTIBODIES

www.bioss.com.cn

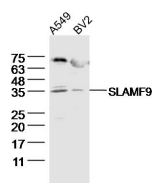
sales@bioss.com.cn

techsupport@bioss.com.cn

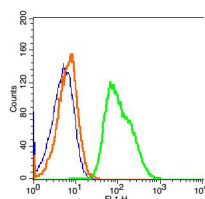
400-901-9800

— DATASHEET —

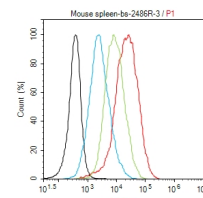
Host: Rabbit	Isotype: IgG	Applications: WB (1:500-2000) Flow-Cyt (1µg/Test)
Clonality: Polyclonal		Reactivity: Human, Mouse
GeneID: 89886	SWISS: Q96A28	
Target: SLAMF9		
Immunogen: KLH conjugated synthetic peptide derived from human SLAMF9: 51-150/289. < Extracellular >		
Purification: affinity purified by Protein A		
Concentration: 1mg/ml		
Storage: 0.01M TBS (pH7.4) with 1% BSA, 0.02% Proclin300 and 50% Glycerol. Shipped at 4°C. Store at -20°C for one year. Avoid repeated freeze/thaw cycles.		
Background: This gene encodes a member of the signaling lymphocytic activation molecule family. May play a role in the immune response. The encoded protein is a cell surface molecule that consists of two extracellular immunoglobulin domains, a transmembrane domain and a short cytoplasmic tail that lacks the signal transduction motifs found in other family members. Alternative splicing results in multiple transcript variants. Expression is predominantly restricted in hematopoietic tissues. Expressed in heart, spleen, liver, intestine, muscle and testis. Expressed in immune cells, including monocytes, dendritic, B- and T-cells. No expression was seen in peripheral blood leukocytes. Expressed in the leukocyte cell line THP1-macrophage.		
		Predicted MW.: 30 kDa
		Subcellular Location: Cell membrane

— VALIDATION IMAGES —

Sample: A549 (human) cell lysate at 40 µg BV2 (mouse) cell lysate at 40 µg
 Primary: Anti-SLAMF9 (bs-2486R) at 1/300 dilution
 Secondary: IRDye800CW Goat Anti-Rabbit IgG at 1/20000 dilution
 Predicted band size: 30 kDa
 Observed band size: 35 kDa



Blank control: (mo) splenocytes (blue)
 Isotype Control Antibody: Rabbit IgG-FITC (orange)
 Primary Antibody Dilution: 1 µl in 100 µL 1X PBS containing 0.5% BSA (green).



Blank control (black line): Raji (black)
 (The cells were fixed with 2% paraformaldehyde (10 min), then permeabilized with PBST for 30 min on room temperature)
 Primary Antibody (red line): Rabbit Anti-SLAMF9 antibody (bs-2486R)
 Dilution: 1 µg / 10⁶ cells
 Isotype Control Antibody (green line): Rabbit IgG
 Secondary Antibody (white blue line): Goat anti-rabbit IgG-FITC
 Dilution: 1 µg / test.

— SELECTED CITATIONS —

- **[IF=1.9]** Kunhua ZHENG. et al. The imprinted *Igf2-Igf2r* axis is critical for exosome biogenesis during the early development of bovine placenta. *J. reprod. dev.* 2025 Feb 5;71(1):41-48. Western Blot, IHC, IF; Bovine. 39662929