

CD11c Rabbit pAb

Catalog Number: bs-2508R

Target Protein: CD11c

Concentration: 1mg/ml

Form: Liquid

Host: Rabbit

Clonality: Polyclonal

Isotype: IgG

Applications: Flow-Cyt (1µg/Test)

Reactivity: Human, Mouse (predicted:Rat, Dog)

Predicted MW: 126 kDa

Detected MW: 145-150 kDa

Entrez Gene: 3687

Swiss Prot: P20702

Source: KLH conjugated synthetic peptide derived from human Integrin Alpha X: 501-600/1163.

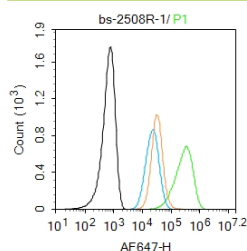
Purification: affinity purified by Protein A

Storage: 0.01M TBS (pH7.4) with 1% BSA, 0.02% Proclin300 and 50% Glycerol.

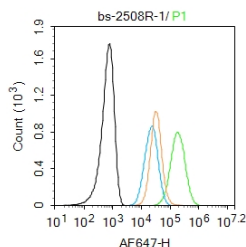
Shipped at 4°C. Store at -20°C for one year. Avoid repeated freeze/thaw cycles.

Background: This gene encodes the integrin alpha X chain protein. Integrins are heterodimeric integral membrane proteins composed of an alpha chain and a beta chain. This protein combines with the beta 2 chain (ITGB2) to form a leukocyte-specific integrin referred to as inactivated-C3b (iC3b) receptor 4 (CR4). The alpha X beta 2 complex seems to overlap the properties of the alpha M beta 2 integrin in the adherence of neutrophils and monocytes to stimulated endothelium cells, and in the phagocytosis of complement coated particles. [provided by RefSeq].

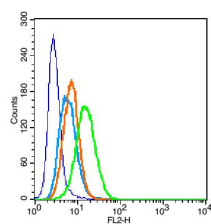
VALIDATION IMAGES



Blank control: Raw264.7. Primary Antibody (green line): Rabbit Anti-CD11c antibody (bs-2508R) Dilution: 1µg /10⁶ cells; Isotype Control Antibody (orange line): Rabbit IgG . Secondary Antibody : Goat anti-rabbit IgG-AF647 Dilution: 1µg /test. Protocol The cells were incubated in 5%BSA to block non-specific protein-protein interactions for 30 min at room temperature .Cells stained with Primary Antibody for 30 min at room temperature. The secondary antibody used for 40 min at room temperature. Acquisition of 20,000 events was performed.



Blank control: Raw264.7. Primary Antibody (green line): Rabbit Anti-CD11c antibody (bs-2508R) Dilution: 1µg /10⁶ cells; Isotype Control Antibody (orange line): Rabbit IgG . Secondary Antibody : Goat anti-rabbit IgG-AF647 Dilution: 1µg /test. Protocol The cells were incubated in 5%BSA to block non-specific protein-protein interactions for 30 min at room temperature .Cells stained with Primary Antibody for 30 min at room temperature. The secondary antibody used for 40 min at room temperature. Acquisition of 20,000 events was performed.



Blank control (blue): U937 cells(fixed with 2% paraformaldehyde (10 min)). Primary Antibody:Rabbit Anti-CD11c antibody(bs-2508R), Dilution: 1µg in 100 µL 1X PBS containing 0.5% BSA; Isotype Control Antibody: Rabbit IgG(orange) used under the same conditions); Secondary Antibody: Goat anti-rabbit IgG-PE(white blue), Dilution: 1:200 in 1 X PBS containing 0.5% BSA.

PRODUCT SPECIFIC PUBLICATIONS

[IF=15.5] Chen Hao. et al. Arula-7 powder improves diarrhea and intestinal epithelial tight junction function associated with its regulation of intestinal flora in calves infected with pathogenic Escherichia coli O1. MICROBIOME. 2023 Dec;11(1):1-14 IF ; Bovine . 37542271

[IF=15.304] Jinbo Li. et al. Autophagy inhibition recovers deficient ICD-based cancer immunotherapy. BIOMATERIALS. 2022 Aug;287:121651 IF ; Mouse . 35777331

[IF=10.435] Wan, Guoyun. et al. Gene augmented nuclear-targeting sonodynamic therapy via Nrf2 pathway-based redox balance adjustment boosts peptide-based anti-PD-L1 therapy on colorectal cancer. J Nanobiotechnol. 2021 Dec;19(1):1-26 IF ; Mouse . 34715867

[IF=7.727] Jinbo Li. et al. Low dose shikonin and anthracyclines coloaded liposomes induce robust immunogenetic cell death for synergistic chemo-immunotherapy. J Control Release. 2021 Jul;335:306 IHC ; Mouse . 34081995

[IF=7.577] Wei C et al. Nanocolloids in drinking water increase the risk of obesity in mice by modulating gut microbes Environ Int.2021 Jan;146:106302. IHC ; Mouse . 33395945