

bsm-33019M

[Primary Antibody]

GFP Mouse mAb

BioSS
ANTIBODIES

www.bioss.com.cn

sales@bioss.com.cn

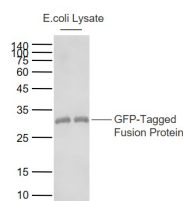
techsupport@bioss.com.cn

400-901-9800

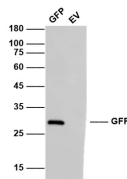
— DATASHEET —

Host: Mouse	Isotype: IgG	Applications: WB (1:50000-500000) ELISA (1:1000-5000) Reactivity: Species independent
Clonality: Monoclonal	CloneNo.: 4G6	
Target: GFP		
Purification: affinity purified by Protein G		
Concentration: 1mg/ml		
Storage: Size : 50ul/100ul/500ul 0.01M TBS (pH7.4) with 1% BSA, 0.02% Proclin300 and 50% Glycerol. Size : 200ug (PBS only) 0.01M PBS Shipped at 4°C. Store at -20°C for one year. Avoid repeated freeze/thaw cycles.		
Background: Enhanced Blue Fluorescent Protein (EBFP) emits a strong blue fluorescence. EBFP can be used as protein "tags" to study the sub-cellular localization of proteins and/or their translocation upon stimulation or as markers for transfection in transient and stable expression systems.		

— VALIDATION IMAGES —



Sample: GFP-tagged fusion protein
Overexpression E.coli Lysate (Cat#: bs-33009P)
at 4 ug Primary: Anti-GFP-Tag (bsm-33019M) at
1/1000000 dilution Secondary: IRDye800CW Goat
Anti-Mouse IgG at 1/20000 dilution Predicted
band size: 28 kD Observed band size: 30 kD



Transformed (GFP or EV) E. coli cells lysates were
subjected to SDS-PAGE followed by WB with
bsm-33019M (Anti-GFP) at dilution of 1:1,000,000
incubated at 4°C overnight.

— SELECTED CITATIONS —

- **[IF=6.2]** Wenzhao Wang. et al. The auxin-responsive CsSPL9-CsGH3.4 module finely regulates auxin levels to suppress the development of adventitious roots in tea (*Camellia sinensis*). PLANT J. 2024 Jul;: WB ;Arabidopsis thaliana,Shaancha 1 tea,Zhongcha108 tea. 39012276
- **[IF=3.7]** Chenglong Rao. et al. Burkholderia pseudomallei BopE suppresses the Rab32-dependent defense pathway to promote its intracellular replication and virulence. MSPHERE. 2024 Oct 21 WB ;Human. 39431830