

bsm-33200M**[Primary Antibody]****phospho-Serine Mouse mAb****Bioss**
ANTIBODIES

www.bioss.com.cn

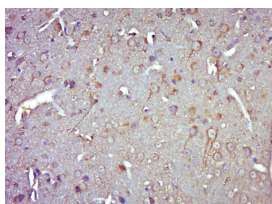
sales@bioss.com.cn

techsupport@bioss.com.cn

400-901-9800

— DATASHEET —

Host: Mouse	Isotype: IgG	Applications: IHC-P (1:100-500) IHC-F (1:100-500) IF (1:100-500) Reactivity: Mouse (predicted: Phosphoserine) Subcellular Location: Cytoplasm
Clonality: Monoclonal	CloneNo.: 7C11	
Target: Serine		
Purification: affinity purified by Protein G		
Concentration: 1mg/ml		
Storage: Size : 50ul/100ul/200ul 0.01M TBS (pH7.4) with 1% BSA, 0.02% Proclin300 and 50% Glycerol. Size : 200ug (PBS only) 0.01M PBS Shipped at 4°C. Store at -20°C for one year. Avoid repeated freeze/thaw cycles.		
Background: Protein phosphorylation provides a signalling system that can be thought of as a kind of protein on/off switch for many cellular signalling pathways. Phosphorylation is observed on serine, threonine, tyrosine and histidine residues. Cellular networks underlying phosphorylation can be very complex and often occurs on multiple distinct sites on a given protein. Phospho-specific antibodies are becoming critical reagents both for basic research and for clinical diagnosis.		

— VALIDATION IMAGES —

Paraformaldehyde-fixed, paraffin embedded (Mouse brain); Antigen retrieval by boiling in sodium citrate buffer (pH6.0) for 15min; Block endogenous peroxidase by 3% hydrogen peroxide for 20 minutes; Blocking buffer (normal goat serum) at 37°C for 30min; Antibody incubation with (Phosphoserine) Polyclonal Antibody, Unconjugated (bsm-33200M-7C11) at 1:500 overnight at 4°C, followed by a conjugated secondary (sp-0023) for 20 minutes and DAB staining.