

bs-7753R**[Primary Antibody]****KLHL9 Rabbit pAb****Bioss**
ANTIBODIES

www.bioss.com.cn

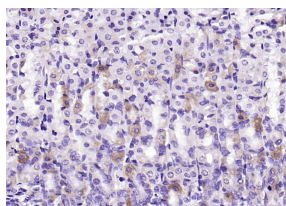
sales@bioss.com.cn

techsupport@bioss.com.cn

400-901-9800

— DATASHEET —

Host: Rabbit	Isotype: IgG	Applications: IHC-P (1:100-500) IHC-F (1:100-500) IF (1:100-500) Reactivity: Rat (predicted: Human, Mouse, Pig, Sheep, Cow, Dog, Horse) Predicted MW.: 69 kDa Subcellular Location: Cytoplasm
Clonality: Polyclonal		
GeneID: 55958	SWISS: Q9P2J3	
Target: KLHL9		
Immunogen: KLH conjugated synthetic peptide derived from human KLHL9: 161-260/617.		
Purification: affinity purified by Protein A		
Concentration: 1mg/ml		
Storage: 0.01M TBS (pH7.4) with 1% BSA, 0.02% Proclin300 and 50% Glycerol. Shipped at 4°C. Store at -20°C for one year. Avoid repeated freeze/thaw cycles.		
Background: KLHL9 is the substrate-specific adapter for a CUL3-based E3 ubiquitin-protein ligase complex. Within this complex, KLHL9 controls the dynamic behavior of AURKB on mitotic chromosomes and thereby coordinates faithful mitotic progression and completion of cytokinesis.		

— VALIDATION IMAGES —

Paraformaldehyde-fixed, paraffin embedded (rat stomach); Antigen retrieval by boiling in sodium citrate buffer (pH6.0) for 15min; Block endogenous peroxidase by 3% hydrogen peroxide for 20 minutes; Blocking buffer (normal goat serum) at 37°C for 30min; Antibody incubation with (KLHL9) Polyclonal Antibody, Unconjugated (bs-7753R) at 1:200 overnight at 4°C, followed by operating according to SP Kit(Rabbit) (sp-0023) instructions and DAB staining.