

bs-11180R**[Primary Antibody]****ABCA7 Rabbit pAb****Bioss**
ANTIBODIES

www.bioss.com.cn

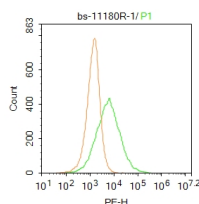
sales@bioss.com.cn

techsupport@bioss.com.cn

400-901-9800

— DATASHEET —

Host: Rabbit Clonality: Polyclonal GeneID: 10347 Target: ABCA7 Immunogen: KLH conjugated synthetic peptide derived from human ABCA7: 251-350/2146. < Extracellular > Purification: affinity purified by Protein A Concentration: 1mg/ml Storage: 0.01M TBS (pH7.4) with 1% BSA, 0.02% Proclin300 and 50% Glycerol. Shipped at 4°C. Store at -20°C for one year. Avoid repeated freeze/thaw cycles. Background: ATP-binding cassette (ABC) transporters are an evolutionarily conserved family of widely-expressed proteins that use ATP hydrolysis to catalyze the transport of various molecules across extracellular and intracellular membranes. Eukaryotic ABC transporters are largely responsible for trafficking hydrophobic compounds either within the cell as part of a metabolic process, outside the cell for transport to other organs, or for secretion from the body. The cholesterol-responsive transporter, ABCA7, maps to human chromosome 19 and mouse chromosome 10 and has been reported as a candidate regulator of ceramide transport in epidermal lipid reorganization. High expression levels of ABCA7 have been reported in myelolymphatic tissues, reticuloendothelial cells, peripheral leukocytes, thymus, spleen and bone marrow. This expression pattern of the two alternatively-spliced isoforms also indicates an involvement in lipid homeostasis in cells of the immune system, though the complete role of ABCA7 is not yet known. Full-length type I ABCA7 has shown plasma membrane localization, while the type II splicing variant has shown expression predominantly in the endoplasmic reticulum.	Isotype: IgG SWISS: Q8IZY2 Applications: Flow-Cyt (1ug/test) Reactivity: Human (predicted: Mouse, Rat) Predicted MW.: 234 kDa Subcellular Location: Cell membrane ,Cytoplasm
--	---

— VALIDATION IMAGES —

Blank control: Hela. Primary Antibody (green line): Rabbit Anti-ABCA7 antibody (bs-11180R)
 Dilution: 1µg /10⁶ cells; Isotype Control
 Antibody (orange line): Rabbit IgG. Secondary Antibody : Goat anti-rabbit IgG-PE Dilution: 1µg /test. Protocol The cells were fixed with 4% PFA (10min at room temperature) and then permeabilized with 20% PBST for 20 min at room temperature. The cells were then incubated in 5%BSA to block non-specific protein-protein interactions for 30 min at room temperature. Cells stained with Primary Antibody for 30 min at room temperature. The secondary antibody used for 40 min at room temperature. Acquisition of 20,000 events was performed.

Important Note: This product as supplied is intended for research use only, not for use in human, therapeutic or diagnostic applications.