

**bs-11172R****[ Primary Antibody ]****NAP1L2 Rabbit pAb****BioSS**  
**ANTIBODIES**

www.bioss.com.cn

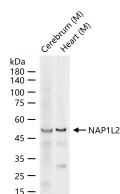
sales@bioss.com.cn

techsupport@bioss.com.cn

400-901-9800

**— DATASHEET —**

<b>Host:</b> Rabbit	<b>Isotype:</b> IgG	<b>Applications:</b> WB (1:500-2000)
<b>Clonality:</b> Polyclonal		<b>Reactivity:</b> Mouse (predicted: Human, Rat, Rabbit, Pig, Dog, Horse)
<b>GeneID:</b> 4674	<b>SWISS:</b> Q9ULW6	
<b>Target:</b> NAP1L2		
<b>Immunogen:</b> KLH conjugated synthetic peptide derived from human NAP1L2: 201-300/460.		<b>Predicted MW.:</b> 53 kDa
<b>Purification:</b> affinity purified by Protein A		<b>Subcellular Location:</b> Nucleus
<b>Concentration:</b> 1mg/ml		
<b>Storage:</b> 0.01M TBS (pH7.4) with 1% BSA, 0.02% Proclin300 and 50% Glycerol. Shipped at 4°C. Store at -20°C for one year. Avoid repeated freeze/thaw cycles.		
<b>Background:</b> The protein encoded by this intronless gene is a member of the nucleosome assembly protein (NAP) family. The encoded protein represents a class of tissue-specific factors that interact with chromatin to regulate neuronal cell proliferation. [provided by RefSeq, Jan 2011]		

**— VALIDATION IMAGES —**

25 ug total protein per lane of various lysates (see on figure) probed with NAP1L2 polyclonal antibody, unconjugated (bs-11172R) at 1:1000 dilution and 4°C overnight incubation. Followed by conjugated secondary antibody incubation at r.t. for 60 min.