

**bs-14150R****[ Primary Antibody ]****CYP2C18 Rabbit pAb****BioSS**  
**ANTIBODIES**

www.bioss.com.cn

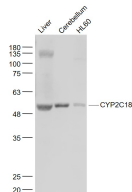
sales@bioss.com.cn

techsupport@bioss.com.cn

400-901-9800

**— DATASHEET —**

<b>Host:</b> Rabbit	<b>Isotype:</b> IgG	<b>Applications:</b> WB (1:500-2000)
<b>Clonality:</b> Polyclonal		
<b>GeneID:</b> 1562	<b>SWISS:</b> P33260	
<b>Target:</b> CYP2C18		
<b>Immunogen:</b> KLH conjugated synthetic peptide derived from human CYP2C18: 401-490/490.		
<b>Purification:</b> affinity purified by Protein A		<b>Reactivity:</b> Human, Mouse (predicted: Rat, Rabbit, Pig, Sheep)
<b>Concentration:</b> 1mg/ml		<b>Predicted MW.:</b> 56 kDa
<b>Storage:</b> 0.01M TBS (pH7.4) with 1% BSA, 0.02% Proclin300 and 50% Glycerol. Shipped at 4°C. Store at -20°C for one year. Avoid repeated freeze/thaw cycles.		<b>Subcellular Location:</b> Cytoplasm
<b>Background:</b> This gene encodes a member of the cytochrome P450 superfamily of enzymes. The cytochrome P450 proteins are monooxygenases which catalyze many reactions involved in drug metabolism and synthesis of cholesterol, steroids and other lipids. This protein localizes to the endoplasmic reticulum but its specific substrate has not yet been determined. The gene is located within a cluster of cytochrome P450 genes on chromosome 10q24. An additional gene, CYP2C17, was once thought to exist; however, CYP2C17 is now considered an artefact based on a chimera of CYP2C18 and CYP2C19. Alternatively spliced transcript variants encoding different isoforms have been found for this gene. [provided by RefSeq, Jul 2008]		

**— VALIDATION IMAGES —**

Sample: Liver (Mouse) Lysate at 40 ug  
Cerebellum (Mouse) Lysate at 40 ug  
HL60(Human) Cell Lysate at 30 ug Primary: Anti-CYP2C18 (bs-14150R) at 1/1000 dilution  
Secondary: IRDye800CW Goat Anti-Rabbit IgG at 1/20000 dilution Predicted band size: 56 kD  
Observed band size: 56 kD