

bs-18259R**[Primary Antibody]****phospho- LIM kinase 2 (Ser293) Rabbit pAb****BioSS**
ANTIBODIES

www.bioss.com.cn

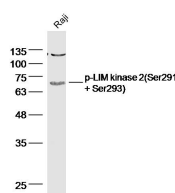
sales@bioss.com.cn

techsupport@bioss.com.cn

400-901-9800

— DATASHEET —

Host: Rabbit Clonality: Polyclonal GeneID: 3985 Target: LIM kinase 2 (Ser293) Immunogen: KLH conjugated synthesised phosphopeptide derived from human LIM Kinase 1 around the phosphorylation site of Ser293) : SK(p-S)PG. Purification: affinity purified by Protein A Concentration: 1mg/ml Storage: 0.01M TBS (pH7.4) with 1% BSA, 0.02% Proclin300 and 50% Glycerol. Shipped at 4°C. Store at -20°C for one year. Avoid repeated freeze/thaw cycles. Background: There are approximately 40 known eukaryotic LIM proteins, so named for the LIM domains they contain. LIM domains are highly conserved cysteine-rich structures containing 2 zinc fingers. Although zinc fingers usually function by binding to DNA or RNA, the LIM motif probably mediates protein-protein interactions. LIM kinase-1 and LIM kinase-2 belong to a small subfamily with a unique combination of 2 N-terminal LIM motifs and a C-terminal protein kinase domain. The protein encoded by this gene is phosphorylated and activated by ROCK, a downstream effector of Rho, and the encoded protein, in turn, phosphorylates cofilin, inhibiting its actin-depolymerizing activity. It is thought that this pathway contributes to Rho-induced reorganization of the actin cytoskeleton. At least three transcript variants encoding different isoforms have been found for this gene. [provided by RefSeq, Jul 2008]	Isotype: IgG SWISS: P53671 Applications: WB (1:500-2000) Reactivity: Human (predicted: Mouse, Rat, Rabbit, Pig, Sheep, Cow, Chicken, Dog, Horse) Predicted MW.: 72 kDa Subcellular Location: Cytoplasm ,Nucleus
--	--

— VALIDATION IMAGES —

Sample: Raji(Human) Cell Lysate at 40 ug
 Primary: Anti-p-LIM kinase2(Ser291+Ser293)
 (bs-18259R) at 1/300 dilution Secondary:
 IRDye800CW Goat Anti-Rabbit IgG at 1/20000
 dilution Predicted band size: 72 kD Observed
 band size: 72 kD