

bs-18249R**[Primary Antibody]****LILRA2/CD85h Rabbit pAb****BioSS**
ANTIBODIES

www.bioss.com.cn

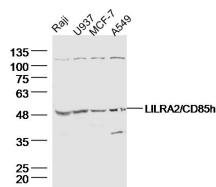
sales@bioss.com.cn

techsupport@bioss.com.cn

400-901-9800

— DATASHEET —

Host: Rabbit	Isotype: IgG	Applications: WB (1:500-2000)
Clonality: Polyclonal		Reactivity: Human
GeneID: 11027	SWISS: Q8N149	
Target: LILRA2/CD85h		
Immunogen: KLH conjugated synthetic peptide derived from human LILRA2/CD85h: 24-130/483. < Extracellular >		Predicted MW.: 51 kDa
Purification: affinity purified by Protein A		Subcellular Location: Cell membrane
Concentration: 1mg/ml		
Storage: 0.01M TBS (pH7.4) with 1% BSA, 0.02% Proclin300 and 50% Glycerol. Shipped at 4°C. Store at -20°C for one year. Avoid repeated freeze/thaw cycles.		
Background: This gene encodes a member of a family of immunoreceptors that are expressed predominantly on monocytes and B cells, and at lower levels on dendritic cells and natural killer cells. The encoded protein is an activating receptor that inhibits dendritic cell differentiation and antigen presentation and suppresses innate immune response. Alternatively spliced transcript variants encoding different isoforms have been found. This gene is located in a cluster of related genes on chromosome 19 and there is a pseudogene for this gene on chromosome 3. [provided by RefSeq, Mar 2014]		

— VALIDATION IMAGES —

Sample: Raji Cell (Human) Lysate at 40 ug U937
Cell (Human) Lysate at 40 ug MCF-7 Cell (Human)
Lysate at 40 ug A549 Cell (Human) Lysate at 40
ug Primary: Anti- LILRA2/CD85h (bs-18249R) at
1/300 dilution Secondary: IRDye800CW Goat
Anti-Rabbit IgG at 1/20000 dilution Predicted
band size: 51 kD Observed band size: 51 kD