

**bs-18248R**

**[ Primary Antibody ]**

## MYL2 Rabbit pAb

**Bioss**  
ANTIBODIES

www.bioss.com.cn

sales@bioss.com.cn

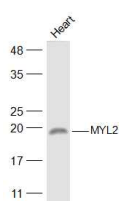
techsupport@bioss.com.cn

400-901-9800

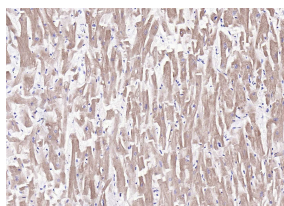
### — DATASHEET —

<b>Host:</b> Rabbit	<b>Isotype:</b> IgG	<b>Applications:</b> <b>WB</b> (1:500-2000) <b>IHC-P</b> (1:100-500) <b>IHC-F</b> (1:100-500) <b>IF</b> (1:100-500)  <b>Reactivity:</b> Human, Mouse, Rat (predicted: Rabbit, Pig, Chicken)  <b>Predicted MW.:</b> 20 kDa  <b>Subcellular Location:</b> Cytoplasm
<b>Clonality:</b> Polyclonal		
<b>GeneID:</b> 4633	<b>SWISS:</b> P10916	
<b>Target:</b> MYL2		
<b>Immunogen:</b> KLH conjugated synthetic peptide derived from human Cardiac ventricular myosin light chain 2: 11-110/166.		
<b>Purification:</b> affinity purified by Protein A		
<b>Concentration:</b> 1mg/ml		
<b>Storage:</b> 0.01M TBS (pH7.4) with 1% BSA, 0.02% Proclin300 and 50% Glycerol. Shipped at 4°C. Store at -20°C for one year. Avoid repeated freeze/thaw cycles.		
<b>Background:</b> This gene encodes the regulatory light chain associated with cardiac myosin beta (or slow) heavy chain. Ca <sup>+</sup> triggers the phosphorylation of regulatory light chain that in turn triggers contraction. Mutations in this gene are associated with mid-left ventricular chamber type hypertrophic cardiomyopathy. [provided by RefSeq, Jul 2008]		

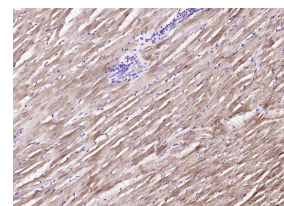
### — VALIDATION IMAGES —



Sample: Heart (Mouse) Lysate at 40 ug Primary:  
Anti-MYL2 (bs-18248R) at 1/300 dilution  
Secondary: IRDye800CW Goat Anti-Rabbit IgG at  
1/20000 dilution Predicted band size: 20 kD  
Observed band size: 20 kD



Paraformaldehyde-fixed, paraffin embedded  
(Human heart); Antigen retrieval by boiling in  
sodium citrate buffer (pH6.0) for 15min; Block  
endogenous peroxidase by 3% hydrogen  
peroxide for 20 minutes; Blocking buffer (normal  
goat serum) at 37°C for 30min; Incubation with  
(MYL2) Polyclonal Antibody, Unconjugated  
(bs-18248R) at 1:100 overnight at 4°C, followed  
by operating according to SP Kit(Rabbit)  
(sp-0023) instructions and DAB staining.



Paraformaldehyde-fixed, paraffin embedded (rat  
heart); Antigen retrieval by boiling in sodium  
citrate buffer (pH6.0) for 15min; Block  
endogenous peroxidase by 3% hydrogen  
peroxide for 20 minutes; Blocking buffer (normal  
goat serum) at 37°C for 30min; Incubation with  
(MYL2) Polyclonal Antibody, Unconjugated  
(bs-18248R) at 1:100 overnight at 4°C, followed  
by operating according to SP Kit(Rabbit)  
(sp-0023) instructions and DAB staining.