

---

## Complement C3d fragment Rabbit pAb

Catalog Number: bs-21990R

Target Protein: Complement C3d fragment

Concentration: 1mg/ml

Form: Liquid

Host: Rabbit

Clonality: Polyclonal

Isotype: IgG

Applications: WB (1:500-2000)

Reactivity: Mouse (predicted:Human, Rat, Pig, Sheep)

Predicted MW: 33/109/181 kDa

Subcellular Secreted

Locations:

Entrez Gene: 718

Swiss Prot: P01024

Source: KLH conjugated synthetic peptide derived from human Complement C3d fragment:  
991-1090/1663.

Purification: affinity purified by Protein A

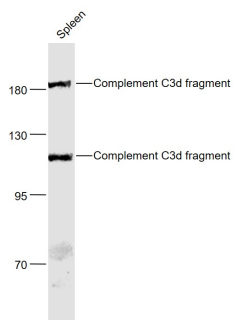
Storage: 0.01M TBS (pH7.4) with 1% BSA, 0.02% Proclin300 and 50% Glycerol.

Shipped at 4°C. Store at -20°C for one year. Avoid repeated freeze/thaw cycles.

**Background:** The complement factor C3 consists of an alpha and a beta chain. C3 is a central factor in the complement cascade. It is central to the alternative pathway that leads to the C3 convertase C3bBb. The classical mannose binding lectin activation pathway leads to the C3 convertase C4b2a. These convertases cleave C3 resulting in C3a and C3b. Further degradation leads to the formation of the alpha chain products C3d, C3g and C3c. C3 is an acute phase protein that is produced by a wide range of tissues, including renal epithelial cells and hepatocytes.

### VALIDATION IMAGES

---



Sample: Spleen (Mouse) Lysate at 40 ug Primary: Anti- Complement C3d fragment (bs-21990R) at 1/1000 dilution Secondary: IRDye800CW Goat Anti-Rabbit IgG at 1/20000 dilution Predicted band size: 33' 109' 181 kD Observed band size: 109' 181 kD