

bs-12422R**[Primary Antibody]****BioSS**
ANTIBODIES

www.bioss.com.cn

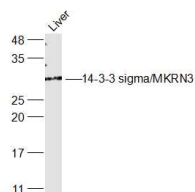
sales@bioss.com.cn

techsupport@bioss.com.cn

400-901-9800

14-3-3 sigma Rabbit pAb**— DATASHEET —**

Host: Rabbit Clonality: Polyclonal GeneID: 2810 Target: 14-3-3 sigma Immunogen: KLH conjugated synthetic peptide derived from human 14-3-3 sigma: 101-200/248. Purification: affinity purified by Protein A Concentration: 1mg/ml Storage: 0.01M TBS (pH7.4) with 1% BSA, 0.02% Proclin300 and 50% Glycerol. Shipped at 4°C. Store at -20°C for one year. Avoid repeated freeze/thaw cycles. Background: This gene encodes a cell cycle checkpoint protein. The encoded protein binds to translation and initiation factors and functions as a regulator of mitotic translation. In response to DNA damage this protein plays a role in preventing DNA errors during mitosis. [provided by RefSeq, Aug 2017]	Isotype: IgG SWISS: P31947	Applications: WB (1:500-2000) Reactivity: Human, Rat (predicted: Mouse, Rabbit, Pig, Sheep, Dog, Horse) Predicted MW.: 28 kDa Subcellular Location: Secreted ,Cytoplasm
--	---	---

— VALIDATION IMAGES —

Sample: Liver(Rat) Cell Lysate at 40 ug Primary:
 Anti-14-3-3 sigma/MKRN3 (bs-12422R) at 1/300
 dilution Secondary: IRDye800CW Goat Anti-Rabbit IgG at 1/20000 dilution Predicted band size: 28 kD Observed band size: 28 kD

— SELECTED CITATIONS —

- **[IF=4.074]** Zhang M et al. Proteomic analysis reveals proteins and pathways associated with lactation in bovine mammary epithelial cell-derived exosomes. J Proteome Res . 2020 Aug 7;19(8):3211-3219. WB ;Cow. 32506918
- **[IF=2.311]** Hao Zeng. et al. High-throughput sequencing-based analysis of gene expression of hepatitis B virus infection-associated human hepatocellular carcinoma. Oncol Lett. 2020 Oct;20(4):1-1 IHC ;Human. 32774491