

bs-8861R**[Primary Antibody]****Bioss**
ANTIBODIES

www.bioss.com.cn

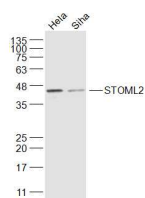
sales@bioss.com.cn

techsupport@bioss.com.cn

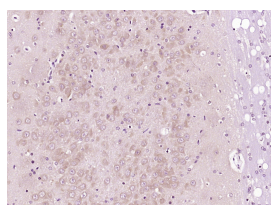
400-901-9800

STOML2 Rabbit pAb**— DATASHEET —**

<p>Host: Rabbit</p> <p>Clonality: Polyclonal</p> <p>GeneID: 30968</p> <p>Target: STOML2</p> <p>Immunogen: KLH conjugated synthetic peptide derived from human STOML2/SLP2: 251-356/356.</p> <p>Purification: affinity purified by Protein A</p> <p>Concentration: 1mg/ml</p> <p>Storage: 0.01M TBS (pH7.4) with 1% BSA, 0.02% Proclin300 and 50% Glycerol. Shipped at 4°C. Store at -20°C for one year. Avoid repeated freeze/thaw cycles.</p> <p>Background: STOML2 is a 356 amino acid member of the mec-2 family of proteins. Expressed ubiquitously at low levels, STOML2 is highly expressed in heart, liver and pancreas. STOML2 is localized to the cytoplasm with some distribution on the membrane. STOML2 was first identified as an overexpressed protein in human endometrial adenocarcinoma. Changes in cell growth in samples with different levels of STOML2 indicate that STOML2 could play a role in endometrial tumorigenesis. STOML2 is also thought to play a role in regulating ion channel conductances or the organization of sphingolipid and cholesterol-rich lipid rafts.</p>	<p>Isotype: IgG</p> <p>SWISS: Q9UJZ1</p>	<p>Applications: WB (1:500-2000) IHC-P (1:100-500) IHC-F (1:100-500) IF (1:100-500)</p> <p>Reactivity: Human, Rat (predicted: Mouse, Rabbit, Pig, Sheep, Cow, Dog, Horse)</p> <p>Predicted MW.: 39 kDa</p> <p>Subcellular Location: Cell membrane ,Cytoplasm</p>
--	--	--

— VALIDATION IMAGES —

Sample: HeLa(Human) Cell Lysate at 30 ug
SiHa(Human) Cell Lysate at 30 ug
Primary: Anti-STOML2 (bs-8861R) at 1/1000 dilution
Secondary: IRDye800CW Goat Anti-Rabbit IgG at 1/20000 dilution
Predicted band size: 39 kD
Observed band size: 39 kD



Paraformaldehyde-fixed, paraffin embedded (Rat brain); Antigen retrieval by boiling in sodium citrate buffer (pH6.0) for 15min; Block endogenous peroxidase by 3% hydrogen peroxide for 20 minutes; Blocking buffer (normal goat serum) at 37°C for 30min; Antibody incubation with (STOML2) Polyclonal Antibody, Unconjugated (bs-8861R) at 1:400 overnight at 4°C, followed by operating according to SP Kit(Rabbit) (sp-0023) instructions and DAB staining.

— SELECTED CITATIONS —

- **[IF=3.177]** Xue Zhang. et al. Stomatin-like protein 2 (SLP2) regulates the proliferation and invasion of trophoblast cells by modulating mitochondrial functions. Placenta. 2020 Oct;100:13 WB,IF,IHC ;. 32814233