

bs-12419R**[Primary Antibody]****14-3-3 Tau Rabbit pAb****Bioss**
ANTIBODIES

www.bioss.com.cn

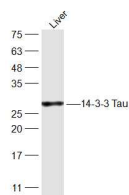
sales@bioss.com.cn

techsupport@bioss.com.cn

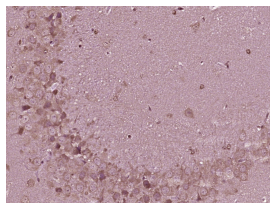
400-901-9800

— DATASHEET —

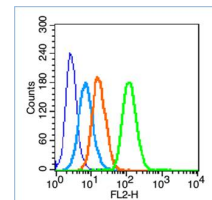
Host: Rabbit	Isotype: IgG	Applications: WB (1:500-2000) IHC-P (1:100-500) IHC-F (1:100-500) IF (1:100-500) Flow-Cyt (1µg/Test) Reactivity: Human, Mouse, Rat (predicted: Pig, Sheep, Cow, Dog) Predicted MW.: 28 kDa Subcellular Location: Cytoplasm
Clonality: Polyclonal		
GeneID: 10971	SWISS: P27348	
Target: 14-3-3 Tau		
Immunogen: KLH conjugated synthetic peptide derived from human 14-3-3 Tau: 31-130/245.		
Purification: affinity purified by Protein A		
Concentration: 1mg/ml		
Storage: 0.01M TBS (pH7.4) with 1% BSA, 0.02% Proclin300 and 50% Glycerol. Shipped at 4°C. Store at -20°C for one year. Avoid repeated freeze/thaw cycles.		
Background: This gene product belongs to the 14-3-3 family of proteins which mediate signal transduction by binding to phosphoserine-containing proteins. This highly conserved protein family is found in both plants and mammals, and this protein is 99% identical to the mouse and rat orthologs. This gene is upregulated in patients with amyotrophic lateral sclerosis. It contains in its 5' UTR a 6 bp tandem repeat sequence which is polymorphic, however, there is no correlation between the repeat number and the disease. [provided by RefSeq, Jul 2008]		

— VALIDATION IMAGES —

Sample: Liver(Rat) Cell Lysate at 40 ug Primary:
Anti-14-3-3 Tau (bs-12419R) at 1/300 dilution
Secondary: IRDye800CW Goat Anti-Rabbit IgG at
1/20000 dilution Predicted band size: 28 kD
Observed band size: 28 kD



Paraformaldehyde-fixed, paraffin embedded
(Mouse brain); Antigen retrieval by boiling in
sodium citrate buffer (pH6.0) for 15min; Block
endogenous peroxidase by 3% hydrogen
peroxide for 20 minutes; Blocking buffer (normal
goat serum) at 37°C for 30min; Antibody
incubation with (14-3-3 Tau) Polyclonal
Antibody, Unconjugated (bs-12419R) at 1:400
overnight at 4°C, followed by operating
according to SP Kit(Rabbit) (sp-0023)
instructions and DAB staining.



Blank control (blue line): HL60 (fixed with 70%
ethanol (overnight at 4°C) and then
permeabilized with 0.1% PBS-Tween for 20 min
at room temperature). Primary Antibody (green
line): Rabbit Anti-14-3-3 Tau antibody
(bs-12419R), Dilution: 1µg /10⁶ cells; Isotype
Control Antibody (orange line): Rabbit IgG .
Secondary Antibody (white blue line): Goat anti-
rabbit IgG-PE, Dilution: 1µg /test.