

**bs-12411R****[ Primary Antibody ]****Bioss**  
ANTIBODIES

www.bioss.com.cn

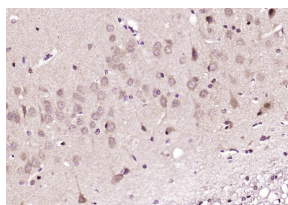
sales@bioss.com.cn

techsupport@bioss.com.cn

400-901-9800

**Prickle Rabbit pAb****— DATASHEET —**

<b>Host:</b> Rabbit	<b>Isotype:</b> IgG	<b>Applications:</b> IHC-P (1:100-500) IHC-F (1:100-500) IF (1:100-500)  <b>Reactivity:</b> Rat (predicted: Human, Mouse, Pig, Sheep, Cow, Dog, Horse)  <b>Predicted MW.:</b> 94 kDa  <b>Subcellular Location:</b> Cell membrane ,Nucleus
<b>Clonality:</b> Polyclonal		
<b>GeneID:</b> 144165	<b>SWISS:</b> Q14C83	
<b>Target:</b> Prickle		
<b>Immunogen:</b> KLH conjugated synthetic peptide derived from human Prickle: 551-650/831.		
<b>Purification:</b> affinity purified by Protein A		
<b>Concentration:</b> 1mg/ml		
<b>Storage:</b> 0.01M TBS (pH7.4) with 1% BSA, 0.02% Proclin300 and 50% Glycerol. Shipped at 4°C. Store at -20°C for one year. Avoid repeated freeze/thaw cycles.		
<b>Background:</b> Prickle1 is an 831 amino acid protein that contains one PET domain and three LIM zinc-binding domains and localizes to the cytoplasm, as well as to the nuclear membrane. Expressed at higher levels in placenta and at lower levels in liver, brain, kidney, lung and pancreas, Prickle1 is thought to function as a nuclear receptor that interacts with NRSF, a silencer protein that binds the DNA sequence element NRSE (neuron-restrictive silencer element). Defects in the gene encoding Prickle1 are associated with autosomal recessive progressive myoclonic epilepsy-1B, which is characterized by quick jerks of the arms, shoulders or legs. The gene encoding Prickle1 maps to human chromosome 12, which encodes over 1,100 genes and comprises approximately 4.5% of the human genome.		

**— VALIDATION IMAGES —**

Paraformaldehyde-fixed, paraffin embedded (rat brain); Antigen retrieval by boiling in sodium citrate buffer (pH6.0) for 15min; Block endogenous peroxidase by 3% hydrogen peroxide for 20 minutes; Blocking buffer (normal goat serum) at 37°C for 30min; Antibody incubation with (Prickle) Polyclonal Antibody, Unconjugated (bs-12411R) at 1:200 overnight at 4°C, followed by operating according to SP Kit(Rabbit) (sp-0023) instructions and DAB staining.