

bsm-52613R**[Primary Antibody]**

Integrin alpha 2 Recombinant Rabbit mAb

BioSS
ANTIBODIES

www.bioss.com.cn

sales@bioss.com.cn

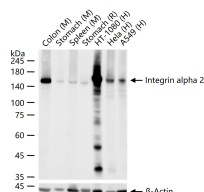
techsupport@bioss.com.cn

400-901-9800

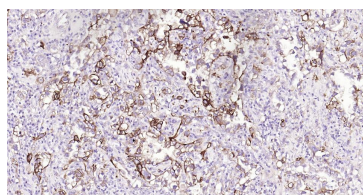
DATASHEET

Host: Rabbit	Isotype: IgG	Applications: WB (1:500-2000) IHC-P (1:50-200) IHC-F (1:50-200) IF (1:50-200) Reactivity: Human, Mouse, Rat Predicted MW.: 127 kDa Subcellular Location: Cell membrane
Clonality: Recombinant	CloneNo.: 14D7	
GeneID: 3673	SWISS: P17301	
Target: Integrin alpha 2		
Immunogen: A synthesized peptide derived from human Integrin alpha 2: 1100-1181.		
Purification: affinity purified by Protein A		
Concentration: 1mg/ml		
Storage: 0.01M TBS (pH7.4) with 1% BSA, 0.02% Proclin300 and 50% Glycerol. Store at -20°C for one year. Avoid repeated freeze/thaw cycles. The lyophilized antibody is stable at room temperature for at least one month and for greater than a year when kept at -20°C. When reconstituted in sterile pH 7.4 0.01M PBS or diluent of antibody the antibody is stable for at least two weeks at 2-4°C.		
Background: Enables amyloid-beta binding activity. Predicted to be involved in several processes, including cell surface receptor signaling pathway; positive regulation of cell migration; and positive regulation of cellular component organization. Predicted to act upstream of or within cell adhesion. Located in basal part of cell and external side of plasma membrane. Is expressed in several structures, including alimentary system; brain; cardiovascular system; eye; and genitourinary system. Human ortholog(s) of this gene implicated in several diseases, including Behcet's disease; artery disease (multiple); blood platelet disease (multiple); diabetes mellitus (multiple); and von Willebrand's disease (multiple). Orthologous to human ITGA2 (integrin subunit alpha 2). [provided by Alliance of Genome Resources, Apr 2022]		

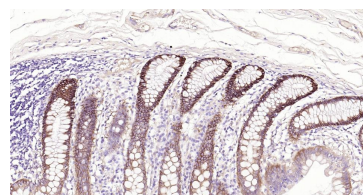
VALIDATION IMAGES



25 ug total protein per lane of various lysates (see on figure) probed with Integrin alpha 2 monoclonal antibody, unconjugated (bsm-52613R) at 1:2000 dilution and 4°C overnight incubation. Followed by conjugated secondary antibody incubation at r.t. for 60 min.



Paraformaldehyde-fixed, paraffin embedded Human Cervical Cancer; Antigen retrieval by boiling in sodium citrate buffer (pH6.0) for 15 min; Antibody incubation with Integrin alpha 2 Monoclonal Antibody, Unconjugated(bsm-52613R) at 1:200 overnight at 4°C, followed by conjugation to the SP Kit (Rabbit, SP-0023) and DAB (C-0010) staining.



Paraformaldehyde-fixed, paraffin embedded Human Colon; Antigen retrieval by boiling in sodium citrate buffer (pH6.0) for 15 min; Antibody incubation with Integrin alpha 2 Monoclonal Antibody, Unconjugated(bsm-52613R) at 1:200 overnight at 4°C, followed by conjugation to the SP Kit (Rabbit, SP-0023) and DAB (C-0010) staining.

SELECTED CITATIONS

- **[IF=14.593]** Bin Wang. et al. Targeted delivery of a STING agonist to brain tumors using bioengineered protein nanoparticles for enhanced immunotherapy. Bioact Mater. 2022 Mar;; IF ;Mouse. 35386310
- **[IF=7.59]** Zhenyin Chen. et al. Dynamic stiffening collagen-coated substrate enhances osteogenic differentiation of mesenchymal stem cells through integrin $\alpha 2\beta 1$. BIOMATER SCI-UK. 2023 May;; WB,IF,ICC ;Rat. 37233200

Important Note: This product as supplied is intended for research use only, not for use in human, therapeutic or diagnostic applications.

- **[IF=7.3]** Lique Jin. et al. High expression ITGA2 affects the expression of MET, PD-L1, CD4 and CD8 with the immune microenvironment in pancreatic cancer patients. FRONT IMMUNOL. 2023; 14: 1209367 IF,IHC ;Human. 37881431
- **[IF=6.4]** Mengqiao Cui. et al. Dysfunctional S1P/S1PR1 signaling in the dentate gyrus drives vulnerability of chronic pain-related memory impairment. ELIFE. 2024 Dec WB ;Mouse. 39699949
- **[IF=5.131]** Kang Lu. et al. Micropattern Silk Fibroin Film Facilitates Tendon Repair In Vivo and Promotes Tenogenic Differentiation of Tendon Stem/Progenitor Cells through the $\alpha 2\beta 1$ /FAK/PI3K/AKT Signaling Pathway In Vitro. STEM CELLS INT. 2023 Jan 13;2023:2915826 WB,IF ;Rat. 36684388