

RAMP3 Rabbit pAb

Catalog Number: bs-24812R

Target Protein: RAMP3

Concentration: 1mg/ml

Form: Liquid

Host: Rabbit

Clonality: Polyclonal

Isotype: IgG

Applications: WB (1:500-2000), ELISA (1:5000-10000)

Reactivity: Mouse

Predicted MW: 14 kDa

Source: KLH conjugated synthetic peptide derived from mouse RAMP3: 81-147/147.

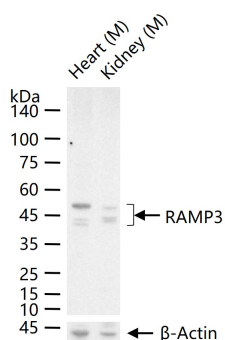
Purification: affinity purified by Protein A

Storage: 0.01M TBS (pH7.4) with 1% BSA, 0.02% Proclin300 and 50% Glycerol.

Shipped at 4°C. Store at -20°C for one year. Avoid repeated freeze/thaw cycles.

Background: Calcitonin receptor like receptor activity modifying protein 3; CRLR activity modifying protein 3; CRLR activity-modifying protein 3; OTTHUMP00000159549; OTTHUMP00000214279; OTTHUMP00000214280; Receptor (calcitonin) activity modifying protein 3; Receptor (G protein-coupled) activity modifying protein 3; Receptor activity modifying protein 3.

VALIDATION IMAGES



25 ug total protein per lane of various lysates (see on figure) probed with RAMP3 polyclonal antibody, unconjugated (bs-24812R) at 1:1000 dilution and 4°C overnight incubation. Followed by conjugated secondary antibody incubation at r.t. for 60 min.