

**[ Primary Antibody ]**

## PKC delta Recombinant Rabbit mAb



**BioSS**  
ANTIBODIES

www.bioss.com.cn

sales@bioass.com.cn

techsupport@bioss.com.cn

400-901-9800

## — DATASHEET

**Host:** Rabbit

**Clonality:** Recombinant

**GeneID:** 5580

**Target:** PKC delta

**Purification:** affinity purified by Protein A

**Concentration:** 1mg/ml

**Storage:** 0.01M TBS (pH7.4) with 1% BSA, 0.02% Proclin300 and 50% Glycerol.  
Shipped at 4°C. Store at -20°C for one year. Avoid repeated freeze/thaw cycles.

**Background:** Protein kinase C (PKC) is a family of serine- and threonine-specific protein kinases that can be activated by calcium and the second messenger diacylglycerol. PKC family members phosphorylate a wide variety of protein targets and are known to be involved in diverse cellular signaling pathways. PKC family members also serve as major receptors for phorbol esters, a class of tumor promoters. Each member of the PKC family has a specific expression profile and is believed to play distinct roles in cells. The protein encoded by this gene is one of the PKC family members. Studies both in human and mice demonstrate that this kinase is involved in B cell signaling and in the regulation of growth, apoptosis, and differentiation of a variety of cell types. Alternatively spliced transcript variants encoding the same protein have been observed. [provided by RefSeq, Jul 2008].

**Isotype:** IgG

**CloneNo.:** 2C4

**SWISS:** 005655

**Applications: WB (1:500-2000)**

**IHC-P** (1:50-200)

**IHC-F (1:50-200)**

**IF (1:50-200)**

**Flow-Cyt** (1:

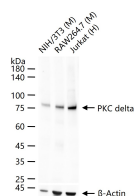
**ICC/IF (1:50-200)**

**Reactivity:** Human, Mouse, Rat

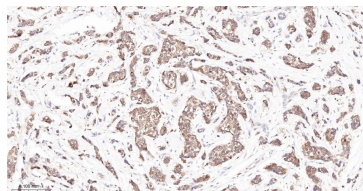
**Predicted** 77 kDa  
**MW.:**

**Subcellular Location:** Cell membrane ,Cytoplasm  
**Location:** .Nucleus

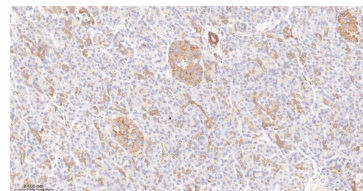
— VALIDATION IMAGES



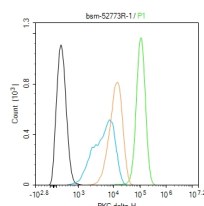
25 ug total protein per lane of various lysates (see on figure) probed with PKC delta monoclonal antibody, unconjugated (bsm-52773R) at 1:1000 dilution and 4°C overnight incubation. Followed by conjugated secondary antibody incubation at r.t. for 60 min.



Paraformaldehyde-fixed, paraffin embedded Human Breast Cancer; Antigen retrieval by boiling in sodium citrate buffer (pH6.0) for 15 min; The section was incubated with PKC delta Monoclonal Antibody, Unconjugated (bsm-52773R) at 1:200 overnight at 4°C, followed by conjugation to the bs-0295G-HRP and DAB (C-0010) staining.



Paraformaldehyde-fixed, paraffin embedded Human Pancreas; Antigen retrieval by boiling in sodium citrate buffer (pH6.0) for 15 min; The section was incubated with PKC delta Monoclonal Antibody, Unconjugated (bsm-52773R) at 1:200 overnight at 4°C, followed by conjugation to the bs-0295G-HRP and DAB (C-0010) staining.



The HeLa (H) cells were fixed with 4% PFA (10 min at r.t.) and then permeabilized with 90% ice-cold methanol for 20 min at -20°C, the cells then were incubated in 5%BSA to block non-specific protein-protein interactions (30 min at r.t.). Primary Antibody (green): Rabbit Anti-PKC

Important Note: This product as supplied is intended for research use only, not for use in human, therapeutic or diagnostic applications.

delta antibody (bsm-52773R,1:100); Secondary  
Antibody (white blue): Goat anti-Rabbit IgG-  
BF488 (bs-60295G-BF488): 1 µg/test. Isotype  
Control (orange): Rabbit IgG (bs-0295P). Blank  
control (black): PBS. Acquisition of 20,000 events  
was performed.