

bsm-52506R**[Primary Antibody]**

Bioss
ANTIBODIES

www.bioss.com.cn

sales@bioss.com.cn

techsupport@bioss.com.cn

400-901-9800

S100B Recombinant Rabbit mAb

DATASHEET

Host: Rabbit**Clonality:** Recombinant**GeneID:** 6285**Target:** S100B**Immunogen:** A synthesized peptide derived from human S100B: 50-92.**Purification:** affinity purified by Protein A**Concentration:** 1mg/ml

Storage: 0.01M TBS (pH7.4) with 1% BSA, 0.02% Proclin300 and 50% Glycerol.
Shipped at 4°C. Store at -20°C for one year. Avoid repeated freeze/thaw cycles.

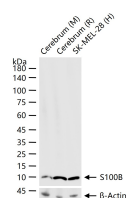
Background: S100 beta is a member of the S100 family of proteins containing 2 EF-hand calcium binding motifs. S100 proteins are localized in the cytoplasm and/or nucleus of a wide range of cells, and involved in the regulation of a number of cellular processes such as cell cycle progression and differentiation. S100 genes include at least 13 members which are located as a cluster on chromosome 1q21; however, this gene is located at 21q22.3. This protein may function in neurite extension, proliferation of melanoma cells, stimulation of Ca²⁺ fluxes, inhibition of PKC mediated phosphorylation, astrocytosis and axonal proliferation, and inhibition of microtubule assembly. Chromosomal rearrangements and altered expression of this gene have been implicated in several neurological, neoplastic, and other types of diseases, including Alzheimer's disease, Down's syndrome, epilepsy, amyotrophic lateral sclerosis, melanoma, and type I diabetes.

Isotype: IgG**CloneNo.:** 26C3**SWISS:** P04271**Applications:** WB (1:500-2000)**IHC-P** (1:50-200)**IHC-F** (1:50-200)**IF** (1:50-200)**Flow-Cyt** (1:50-100)**ICC/IF** (1:50-200)**Reactivity:** Human, Mouse, Rat

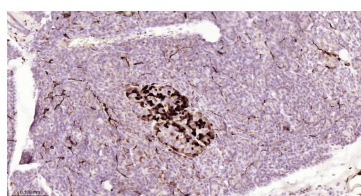
Predicted
MW.: 10 kDa

Subcellular
Location: Cytoplasm ,Nucleus

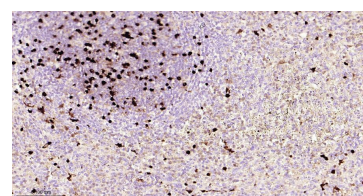
VALIDATION IMAGES



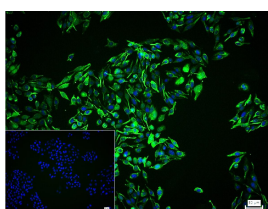
25 ug total protein per lane of various lysates (see on figure) probed with S100B monoclonal antibody, unconjugated (bsm-52506R) at 1:1000 dilution and 4°C overnight incubation. Followed by conjugated secondary antibody incubation at r.t. for 60 min.



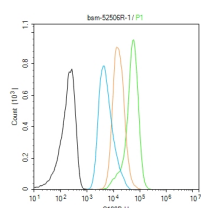
Paraformaldehyde-fixed, paraffin embedded Human Pancreas; Antigen retrieval by boiling in sodium citrate buffer (pH6.0) for 15 min; The section was incubated with S100B Monoclonal Antibody, Unconjugated (bsm-52506R) at 1:200 overnight at 4°C, followed by conjugation to the bs-0295G-HRP and DAB (C-0010) staining.



Paraformaldehyde-fixed, paraffin embedded Human Spleen; Antigen retrieval by boiling in sodium citrate buffer (pH6.0) for 15 min; The section was incubated with S100B Monoclonal Antibody, Unconjugated (bsm-52506R) at 1:200 overnight at 4°C, followed by conjugation to the bs-0295G-HRP and DAB (C-0010) staining.



4% Paraformaldehyde-fixed A375 (H) cell; Triton X-100 at r.t. for 20 min; Antibody incubation with (S100B) monoclonal Antibody, unconjugated (bsm-52506R) 1:100, 90 min at 37°C; followed by conjugated Goat Anti-Rabbit IgG antibody



The A375 (H) cells were fixed with 4% PFA (10 min at r.t.) and then permeabilized with 90% ice-cold methanol for 20 min at -20°C, the cells then were incubated in 5%BSA to block non-specific protein-protein interactions (30 min at

Important Note: This product as supplied is intended for research use only, not for use in human, therapeutic or diagnostic applications.

(green, bs-60295G-BF488) at 37°C for 90 min, DAPI (blue, C02-04002) was used to stain the cell nuclei. PBS instead of the primary antibody was used as the blank control.

r.t.).Primary Antibody (green):Rabbit Anti-S100B antibody (bsm-52506R): 1:50-100/10⁶ cells;
Secondary Antibody (white blue): Goat anti-Rabbit IgG-BF488 (bs-60295G-BF488): 1 µg/test.
Isotype Control (orange): Rabbit IgG (bs-0295P).
Blank control (black): PBS. Acquisition of 20,000 events was performed.