

bsm-52323R**[Primary Antibody]****Bioss**
ANTIBODIES

www.bioss.com.cn

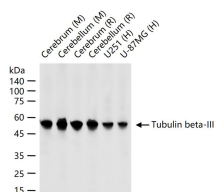
sales@bioss.com.cn

techsupport@bioss.com.cn

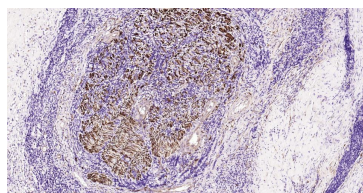
400-901-9800

Tubulin beta-III Recombinant Rabbit mAb**— DATASHEET —**

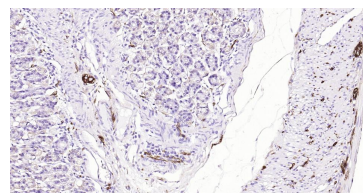
Host: Rabbit	Isotype: IgG	Applications: WB (1:1000-10000) IHC-P (1:100-500) IHC-F (1:100-500) IF (1:100-500) Flow-Cyt (1:50-200) ICC/IF (1:100-500)
Clonality: Recombinant	CloneNo.: 3B7	
GeneID: 10381	SWISS: Q13509	
Target: Tubulin beta-III		
Immunogen: A synthesized peptide derived from human beta III Tubulin: 400-450/450.		
Purification: affinity purified by Protein A		Reactivity: Human, Mouse, Rat
Concentration: 1mg/ml		
Storage: 0.01M TBS (pH7.4) with 1% BSA, 0.02% Proclin300 and 50% Glycerol. Shipped at 4°C. Store at -20°C for one year. Avoid repeated freeze/thaw cycles.		Predicted MW.: 50 kDa
Background: Neuronal Marker Beta III tubulin is abundant in the central and peripheral nervous systems (CNS and PNS) where it is prominently expressed during fetal and postnatal development. As exemplified in cerebellar and sympathoadrenal neurogenesis, the distribution of beta III is neuron-associated, exhibiting distinct temporospatial gradients according to the regional neuroepithelia of origin. However, transient expression of this protein is also present in the subventricular zones of the CNS comprising putative neuronal- and/or glial precursor cells, as well as in Kulchitsky neuroendocrine cells of the fetal respiratory epithelium. This temporally restricted, potentially non-neuronal expression may have implications in the identification of presumptive neurons derived from embryonic stem cells.		Subcellular Location: Cytoplasm

— VALIDATION IMAGES —

25 ug total protein per lane of various lysates (see on figure) probed with Tubulin beta-III monoclonal antibody, unconjugated (bsm-52323R) at 1:5000 dilution and 4°C overnight incubation. Followed by conjugated secondary antibody incubation at r.t. for 60 min.



Paraformaldehyde-fixed, paraffin embedded Human Thyroid Tumor; Antigen retrieval by boiling in sodium citrate buffer (pH6.0) for 15 min; Antibody incubation with Tubulin beta-III Monoclonal Antibody, Unconjugated (bsm-52323R) at 1:200 overnight at 4°C, followed by conjugation to the SP Kit (Rabbit, SP-0023) and DAB (C-0010) staining.



Paraformaldehyde-fixed, paraffin embedded Mouse Stomach; Antigen retrieval by boiling in sodium citrate buffer (pH6.0) for 15 min; Antibody incubation with Tubulin beta-III Monoclonal Antibody, Unconjugated (bsm-52323R) at 1:200 overnight at 4°C, followed by conjugation to the SP Kit (Rabbit, SP-0023) and DAB (C-0010) staining.

— SELECTED CITATIONS —

- **[IF=6.064]** Le Wang. et al. Enteric nervous system damage caused by abnormal intestinal butyrate metabolism may lead to functional constipation. FRONT MICROBIOL. 2023; 14: 1117905 ICC ;Mouse. 37228368
- **[IF=5.195]** Lu Hong. et al. Investigation of Naoluoxtong on the neural stem cells by facilitating proliferation and differentiation in vitro and on protecting neurons by up-regulating the expression of nestin in MCAO rats. J ETHNOPHARMACOL. 2022 Sep;115684 WB ;Rat. 36058480

Important Note: This product as supplied is intended for research use only, not for use in human, therapeutic or diagnostic applications.