

bsm-33160M**[Primary Antibody]****Actin, alpha skeletal muscle Mouse mAb****BioSS**
ANTIBODIES

www.bioss.com.cn

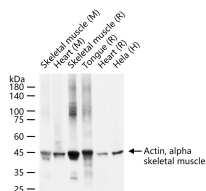
sales@bioss.com.cn

techsupport@bioss.com.cn

400-901-9800

— DATASHEET —

Host: Mouse	Isotype: IgG	Applications: WB (1:500-1000)
Clonality: Monoclonal	CloneNo.: 6C12	Reactivity: Human, Mouse, Rat
GeneID: 58	SWISS: P68133	
Target: Actin, alpha skeletal muscle		
Purification: affinity purified by Protein G		
Concentration: 1mg/ml		
Storage: Size : 50ul/100ul/200ul 0.01M TBS (pH7.4) with 1% BSA, 0.02% Proclin300 and 50% Glycerol. Size : 200ug (PBS only) 0.01M PBS Shipped at 4°C. Store at -20°C for one year. Avoid repeated freeze/thaw cycles.		Predicted MW.: 42 kDa
Background: The product encoded by this gene belongs to the actin family of proteins, which are highly conserved proteins that play a role in cell motility, structure and integrity. Alpha, beta and gamma actin isoforms have been identified, with alpha actins being a major constituent of the contractile apparatus, while beta and gamma actins are involved in the regulation of cell motility. This actin is an alpha actin that is found in skeletal muscle. Mutations in this gene cause nemaline myopathy type 3, congenital myopathy with excess of thin myofilaments, congenital myopathy with cores, and congenital myopathy with fiber-type disproportion, diseases that lead to muscle fiber defects. [provided by RefSeq, Jul 2008]		Subcellular Location: Cytoplasm

— VALIDATION IMAGES —

25 ug total protein per lane of various lysates (see on figure) probed with Actin, alpha skeletal muscle monoclonal antibody, unconjugated (bsm-33160M) at 1:50000 dilution and 4°C overnight incubation. Followed by conjugated secondary antibody incubation at r.t. for 60 min.