

bs-20473R**[Primary Antibody]****BTN2A1 Rabbit pAb****Bioss**
ANTIBODIES

www.bioss.com.cn

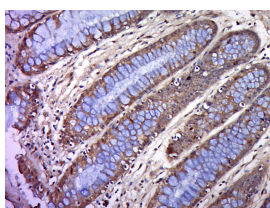
sales@bioss.com.cn

techsupport@bioss.com.cn

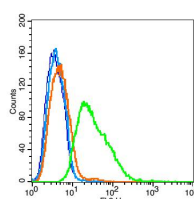
400-901-9800

DATASHEET

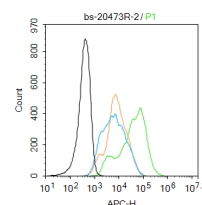
Host: Rabbit	Isotype: IgG	Applications: IHC-P (1:100-500) IHC-F (1:100-500) IF (1:100-500) Flow-Cyt (3µg/Test)
Clonality: Polyclonal		
GeneID: 11120	SWISS: Q7KYR7	
Target: BTN2A1		
Immunogen: KLH conjugated synthetic peptide derived from human BTN2A1: 101-200/527. < Extracellular >		
Purification: affinity purified by Protein A		
Concentration: 1mg/ml		
Storage: Preservative: 0.02% Proclin300, Constituents: 1% BSA, 0.01M PBS, pH7.4. Shipped at 4°C. Store at -20°C for one year. Avoid repeated freeze/thaw cycles.		
Background: This gene encodes a member of the immunoglobulin superfamily. The gene is located in a cluster of butyrophilin-like genes in the juxta-telomeric region of the major histocompatibility complex on chromosome 6. A pseudogene of this gene has been identified in this cluster. The encoded protein is an integral plasma membrane protein involved in lipid, fatty-acid, and sterol metabolism. Alterations in this gene may be associated with several disease states including metabolic syndrome. Multiple alternatively spliced transcript variants encoding different isoforms have been found for this gene. [provided by RefSeq, Jul 2013]		
		Reactivity: Human
		Predicted MW.: 57 kDa
		Subcellular Location: Cell membrane

VALIDATION IMAGES

Paraformaldehyde-fixed, paraffin embedded (Human colon cancer); Antigen retrieval by boiling in sodium citrate buffer (pH6.0) for 15min; Block endogenous peroxidase by 3% hydrogen peroxide for 20 minutes; Blocking buffer (normal goat serum) at 37°C for 30min; Antibody incubation with (BTN2A1) Polyclonal Antibody, Unconjugated (bs-20473R) at 1:400 overnight at 4°C, followed by a conjugated secondary (sp-0023) for 20 minutes and DAB staining.



Blank control: MCF7 cells (blue). Primary Antibody: Rabbit Anti-BTN2A1 antibody (bs-20473R), Dilution: 5µg in 100 µL 1X PBS containing 0.5% BSA; Isotype Control Antibody: Rabbit IgG (orange), used under the same conditions. Secondary Antibody: Goat anti-rabbit IgG-PE (white blue), Dilution: 1:200 in 1 X PBS containing 0.5% BSA.



Blank control: SH-Sy5Y. Primary Antibody (green line): Rabbit Anti-BTN2A1 antibody (bs-20473R) Dilution: 2µg / 10⁶ cells; Isotype Control Antibody (orange line): Rabbit IgG. Secondary Antibody: Goat anti-rabbit IgG-AF647 Dilution: 1µg / test. Protocol The cells were then incubated in 5% BSA to block non-specific protein-protein interactions for 30 min at room temperature. Cells stained with Primary Antibody for 30 min at room temperature. The secondary antibody used for 40 min at room temperature. Acquisition of 20,000 events was performed.

SELECTED CITATIONS

- **[IF=12.469]** Roberto Benelli. et al. Targeting of colorectal cancer organoids with zoledronic acid conjugated to the anti-EGFR antibody cetuximab. J IMMUNOTHER CANCER. 2022 Dec;10(12):e005660 WB,IHC ;Human. 36543375
- **[IF=6.575]** Jordi Leonardo Castrillo Fernandez. et al. Priming of Colorectal Tumor-Associated Fibroblasts with Zoledronic Acid Conjugated to the Anti-Epidermal Growth Factor Receptor Antibody Cetuximab Elicits Anti-Tumor

Important Note: This product as supplied is intended for research use only, not for use in human, therapeutic or diagnostic applications.

V δ 2 T Lymphocytes. CANCERS. 2023 Jan;15(3):610 IF,IHC ;Human. 36765569