
Integrin alpha 2 Rabbit pAb

Catalog Number: bs-2635R

Target Protein: Integrin alpha 2

Concentration: 1mg/ml

Form: Liquid

Host: Rabbit

Clonality: Polyclonal

Isotype: IgG

Applications: Flow-Cyt (1µg /test)

Reactivity: Human (predicted:Mouse, Rat, Rabbit, Pig, Cow, Dog, Horse)

Predicted MW: 127 kDa

Detected MW: 150 kDa

Entrez Gene: 3673

Swiss Prot: P17301

Source: KLH conjugated synthetic peptide derived from human Integrin alpha 2: 1101-1181/1181.

Purification: affinity purified by Protein A

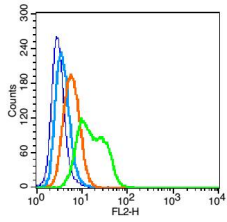
Storage: 0.01M TBS (pH7.4) with 1% BSA, 0.02% Proclin300 and 50% Glycerol.

Shipped at 4°C. Store at -20°C for one year. Avoid repeated freeze/thaw cycles.

Background: Enables amyloid-beta binding activity. Predicted to be involved in several processes, including cell surface receptor signaling pathway; positive regulation of cell migration; and positive regulation of cellular component organization. Predicted to act upstream of or within cell adhesion. Located in basal part of cell and external side of plasma membrane. Is expressed in several structures, including alimentary system; brain; cardiovascular system; eye; and genitourinary system. Human ortholog(s) of this gene implicated in several diseases, including Behcet's disease; artery disease (multiple); blood platelet disease (multiple); diabetes mellitus (multiple); and von Willebrand's disease (multiple).

Orthologous to human ITGA2 (integrin subunit alpha 2). [provided by Alliance of Genome Resources, Apr 2022]

VALIDATION IMAGES



Blank control(blue): U937(fixed with 2% paraformaldehyde (10 min)). Primary Antibody: Rabbit Anti-Integrin alpha 2 antibody(bs-2635R), Dilution: 1 μ g in 100 μ L 1X PBS containing 0.5% BSA; Isotype Control Antibody: Rabbit IgG(orange), used under the same conditions); Secondary Antibody: Goat anti-rabbit IgG-PE(white blue), Dilution: 1:200 in 1 X PBS containing 0.5% BSA.