

**bs-2634R****[ Primary Antibody ]****Bioss**  
ANTIBODIES

www.bioss.com.cn

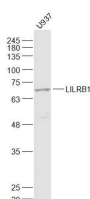
sales@bioss.com.cn

techsupport@bioss.com.cn

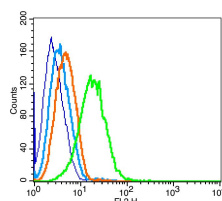
400-901-9800

**LILRB1 Rabbit pAb****— DATASHEET —**

<b>Host:</b> Rabbit <b>Clonality:</b> Polyclonal <b>GeneID:</b> 10859 <b>Target:</b> LILRB1 <b>Immunogen:</b> KLH conjugated synthetic peptide derived from human LILRB1: 151-250/650. < Extracellular > <b>Purification:</b> affinity purified by Protein A <b>Concentration:</b> 1mg/ml <b>Storage:</b> 0.01M TBS (pH7.4) with 1% BSA, 0.02% Proclin300 and 50% Glycerol. Shipped at 4°C. Store at -20°C for one year. Avoid repeated freeze/thaw cycles. <b>Background:</b> This gene is a member of the leukocyte immunoglobulin-like receptor (LIR) family, which is found in a gene cluster at chromosomal region 19q13.4. The encoded protein belongs to the subfamily B class of LIR receptors which contain two or four extracellular immunoglobulin domains, a transmembrane domain, and two to four cytoplasmic immunoreceptor tyrosine-based inhibitory motifs (ITIMs). The receptor is expressed on immune cells where it binds to MHC class I molecules on antigen-presenting cells and transduces a negative signal that inhibits stimulation of an immune response. It is thought to control inflammatory responses and cytotoxicity to help focus the immune response and limit autoreactivity. Multiple transcript variants encoding different isoforms have been found for this gene. [provided by RefSeq, Jul 2008]	<b>Isotype:</b> IgG <b>SWISS:</b> Q8NHL6 <b>Applications:</b> <b>WB</b> (1:500-2000) <b>Flow-Cyt</b> (1µg /test) <b>Reactivity:</b> Human  <b>Predicted MW.:</b> 72 kDa <b>Subcellular Location:</b> Cell membrane
--	---

**— VALIDATION IMAGES —**

Sample: U937(Human) Cell Lysate at 30 ug  
 Primary: Anti-LILRB1 (bs-2634R) at 1/1000 dilution  
 Secondary: IRDye800CW Goat Anti-Rabbit IgG at 1/20000 dilution  
 Predicted band size: 72 kD  
 Observed band size: 72 kD



Blank control(blue):Raji(fixed with 2% paraformaldehyde (10 min)). Primary Antibody:Rabbit Anti-LILRB1 antibody(bs-2634R), Dilution: 1µg in 100 µL 1X PBS containing 0.5% BSA; Isotype Control Antibody: Rabbit IgG(orange), used under the same conditions ); Secondary Antibody: Goat anti-rabbit IgG-PE(white blue), Dilution: 1:200 in 1 X PBS containing 0.5% BSA.