

**bs-2990R****[ Primary Antibody ]****CITED1 Rabbit pAb****BioSS**  
**ANTIBODIES**

www.bioss.com.cn

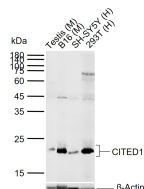
sales@bioss.com.cn

techsupport@bioss.com.cn

400-901-9800

**— DATASHEET —**

<b>Host:</b> Rabbit	<b>Isotype:</b> IgG	<b>Applications:</b> WB (1:500-2000)
<b>Clonality:</b> Polyclonal		<b>Reactivity:</b> Human, Mouse
<b>GeneID:</b> 4435	<b>SWISS:</b> Q99966	
<b>Target:</b> CITED1		
<b>Immunogen:</b> KLH conjugated synthetic peptide derived from human CITED1/ABCC1: 81-180/193.		<b>Predicted MW.:</b> 20 kDa
<b>Purification:</b> affinity purified by Protein A		<b>Subcellular Location:</b> Cytoplasm ,Nucleus
<b>Concentration:</b> 1mg/ml		
<b>Storage:</b> 0.01M TBS (pH7.4) with 1% BSA, 0.02% Proclin300 and 50% Glycerol. Shipped at 4°C. Store at -20°C for one year. Avoid repeated freeze/thaw cycles.		
<b>Background:</b> This gene encodes a member of the CREB-binding protein/p300-interacting transactivator with Asp/Glu-rich C-terminal domain (CITED) family of proteins. The encoded protein, also known as melanocyte-specific gene 1, may function as a transcriptional coactivator and may play a role in pigmentation of melanocytes. Alternatively spliced transcript variants have been described. [provided by RefSeq, Jan 2009]		

**— VALIDATION IMAGES —**

Sample: Lane 1: Mouse Testis tissue lysates Lane 2: Mouse B16 cell lysates Lane 3: Human SH-SY5Y cell lysates Lane 4: Human 293T cell lysates  
Primary: Anti-CITED1 (bs-2990R) at 1/1000 dilution Secondary: IRDye800CW Goat Anti-Rabbit IgG at 1/20000 dilution Predicted band size: 20 kDa Observed band size: 20 kDa