

ZmCCD8 Rabbit pAb

Catalog Number: bs-20097R

Target Protein: ZmCCD8

Concentration: 1mg/ml

Form: Liquid

Host: Rabbit

Clonality: Polyclonal

Isotype: IgG

Applications: WB (1:500-2000)

Reactivity: Zea mays

Predicted MW: 63 kDa

Entrez Gene: 100502522

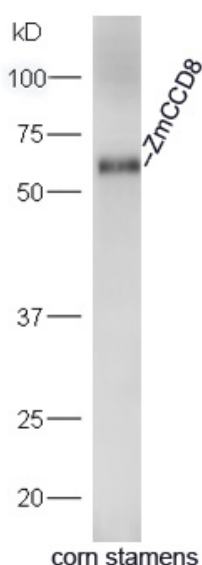
Source: KLH conjugated synthetic peptide derived from human ZmCCD8: 501-572/572.

Purification: affinity purified by Protein A

Storage: 0.01M TBS (pH7.4) with 1% BSA, 0.02% Proclin300 and 50% Glycerol.

Shipped at 4°C. Store at -20°C for one year. Avoid repeated freeze/thaw cycles.

VALIDATION IMAGES



Protein: Corn stamens(Zea mays) lysate at 30ug; Primary: rabbit Anti-ZmCCD8 (bs-20097R) at 1:300;
Secondary: HRP conjugated Goat-Anti-rabbit IgG(bs-0295G-HRP) at 1: 5000; Predicted band size: 63 kD
Observed band size: 63 kD