

---

## Eps8L3 Rabbit pAb

Catalog Number: bs-14615R

Target Protein: Eps8L3

Concentration: 1mg/ml

Form: Liquid

Host: Rabbit

Clonality: Polyclonal

Isotype: IgG

Applications: IHC-P (1:100-500), IHC-F (1:100-500), IF (1:100-500)

Reactivity: Rat (predicted:Human, Mouse, Pig, Sheep, Cow, Dog)

Predicted MW: 67 kDa

Entrez Gene: 79574

Swiss Prot: Q8TE67

Source: KLH conjugated Synthesised phosphopeptide derived from human Ephrin B around the phosphorylation site of Tyr317: 1-100/593.

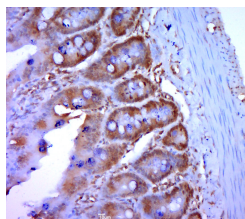
Purification: affinity purified by Protein A

Storage: 0.01M TBS (pH7.4) with 1% BSA, 0.02% Proclin300 and 50% Glycerol.

Shipped at 4°C. Store at -20°C for one year. Avoid repeated freeze/thaw cycles.

Background: This gene encodes a protein that is related to epidermal growth factor receptor pathway substrate 8 (EPS8), a substrate for the epidermal growth factor receptor. The function of this protein is unknown. Alternatively spliced transcript variants encoding different isoforms exist. [provided by RefSeq, Jul 2008]

### VALIDATION IMAGES



Paraformaldehyde-fixed, paraffin embedded (rat intestine tissue); Antigen retrieval by boiling in sodium citrate buffer (pH6.0) for 15min; Block endogenous peroxidase by 3% hydrogen peroxide for 20 minutes; Blocking buffer (normal goat serum) at 37°C for 30min; Antibody incubation with (Eps8L3) Polyclonal Antibody, Unconjugated (bs-14615R) at 1:400 overnight at 4°C, followed by a conjugated secondary (sp-0023) for 20 minutes and DAB staining.