

bs-14121R**[Primary Antibody]****CXorf66 Rabbit pAb****BioSS**
ANTIBODIES

www.bioss.com.cn

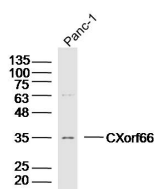
sales@bioss.com.cn

techsupport@bioss.com.cn

400-901-9800

— DATASHEET —

Host: Rabbit	Isotype: IgG	Applications: WB (1:500-2000)
Clonality: Polyclonal		
GeneID: 347487	SWISS: Q5JRM2	
Target: CXorf66		
Immunogen: KLH conjugated synthetic peptide derived from human CXorf66: 12-120/361.		
Purification: affinity purified by Protein A		Reactivity: Human
Concentration: 1mg/ml		
Storage: 0.01M TBS (pH7.4) with 1% BSA, 0.02% Proclin300 and 50% Glycerol. Shipped at 4°C. Store at -20°C for one year. Avoid repeated freeze/thaw cycles.		Predicted MW.: 38 kDa
Background: CXorf66 is a single-pass type I membrane protein that consists of 361 amino acids. The gene encoding CXorf66 maps to human chromosome X. The X and Y chromosomes are the human sex chromosomes. Chromosome X consists of about 153 million base pairs and nearly 1,000 genes. The combination of an X and Y chromosome lead to normal male development while two copies of X lead to normal female development. There are a number of conditions related to an unusual number and combination of sex chromosomes being inherited, including Turner's syndrome, Klinefelter's syndrome and Triple X syndrome. Color blindness, hemophilia, and Duchenne muscular dystrophy are well known X chromosome-linked conditions which affect males more frequently as males carry a single X chromosome.		Subcellular Location: Cell membrane

— VALIDATION IMAGES —

Sample: Panc-1(Human) Cell Lysate at 40 ug
Primary: Anti-CXorf66(bs-14121R) at 1/300
dilution Secondary: IRDye800CW Goat Anti-RabbitIgG at 1/20000 dilution Predicted band size: 38kD Observed band size: 35kD