

**bs-14109R****[ Primary Antibody ]**

**BioSS**  
ANTIBODIES

www.bioss.com.cn

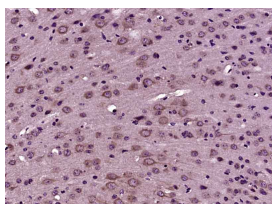
sales@bioss.com.cn

techsupport@bioss.com.cn

400-901-9800

**CTU2 Rabbit pAb****— DATASHEET —**

<b>Host:</b> Rabbit <b>Clonality:</b> Polyclonal <b>GeneID:</b> 348180 <b>Target:</b> CTU2 <b>Immunogen:</b> KLH conjugated synthetic peptide derived from human CTU2/C16orf84: 301-400/515. <b>Purification:</b> affinity purified by Protein A <b>Concentration:</b> 1mg/ml <b>Storage:</b> 0.01M TBS (pH7.4) with 1% BSA, 0.02% Proclin300 and 50% Glycerol. Shipped at 4°C. Store at -20°C for one year. Avoid repeated freeze/thaw cycles. <b>Background:</b> CTU2 is a 515 amino acid cytoplasmic protein that plays a role in the 2-thiolation of mcm(5)S(2)U at wobble positions of tRNA. CTU2 forms a complex with CTU1 and Urm1, and may also form a separate heterodimer with CTU1 to ligate sulfur from thiocarboxylated Urm1 onto tRNA. Existing as three alternatively spliced isoforms, the gene encoding CTU2 maps to human chromosome 16q24.3. Chromosome 16 encodes over 900 genes and comprises nearly 3% of the human genome. The GAN gene is located on chromosome 16 and, with mutation, may lead to giant axonal neuropathy, a nervous system disorder characterized by increasing malfunction with growth. The rare disorder Rubinstein-Taybi syndrome is also associated with chromosome 16, as is Crohn's disease, which is a gastrointestinal inflammatory condition.	<b>Isotype:</b> IgG <b>SWISS:</b> Q2VPK5 <b>Applications:</b> IHC-P (1:100-500) IHC-F (1:100-500) IF (1:100-500) <b>Reactivity:</b> Mouse (predicted: Human, Rat, Sheep, Cow, Horse) <b>Predicted MW.:</b> 56 kDa <b>Subcellular Location:</b> Cytoplasm
---	---

**— VALIDATION IMAGES —**

Paraformaldehyde-fixed, paraffin embedded (Mouse brain); Antigen retrieval by boiling in sodium citrate buffer (pH6.0) for 15min; Block endogenous peroxidase by 3% hydrogen peroxide for 20 minutes; Blocking buffer (normal goat serum) at 37°C for 30min; Antibody incubation with (CTU2) Polyclonal Antibody, Unconjugated (bs-14109R) at 1:400 overnight at 4°C, followed by operating according to SP Kit(Rabbit) (sp-0023) instructions and DAB staining.