

bs-20291R**[Primary Antibody]****MIG6 Rabbit pAb****BioSS**
ANTIBODIES

www.bioss.com.cn

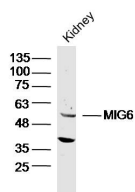
sales@bioss.com.cn

techsupport@bioss.com.cn

400-901-9800

— DATASHEET —

Host: Rabbit	Isotype: IgG	Applications: WB (1:500-2000)
Clonality: Polyclonal		Reactivity: Mouse (predicted: Human, Rat, Rabbit, Sheep, Cow, Dog, Horse)
GeneID: 54206	SWISS: Q9UJM3	Predicted MW.: 51 kDa
Target: MIG6		Subcellular Location: Cell membrane ,Cytoplasm ,Nucleus
Immunogen: KLH conjugated synthetic peptide derived from human MIG6: 301-400/462.		
Purification: affinity purified by Protein A		
Concentration: 1mg/ml		
Storage: Preservative: 0.02% Proclin300, Constituents: 1% BSA, 0.01M PBS, pH7.4. Shipped at 4°C. Store at -20°C for one year. Avoid repeated freeze/thaw cycles.		
Background: ERRFI1 belongs to a class of mammalian regulators of tyrosine kinase signalling, whose expression is transcriptionally controlled by receptor activation. A number of features reveal this protein as a candidate for being a signal transducing protein; proline rich sequences, consensus sequences for phosphorylation of ERK1 and ERK2, a potential binding site for 14-3-3 proteins and other potential sites for phosphorylation by protein kinase C, A and Casein kinase II.		

— VALIDATION IMAGES —

Sample: Kidney (Mouse) Lysate at 40 ug Primary:
Anti-MIG6(bs-20291R) at 1/300 dilution
Secondary: IRDye800CW Goat Anti-Rabbit IgG at
1/20000 dilution Predicted band size: 51kD
Observed band size: 51kD