

bs-19121R

[Primary Antibody]

TIPRL Rabbit pAb

Bioss
ANTIBODIES

www.bioss.com.cn

sales@bioss.com.cn

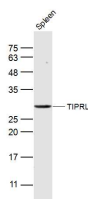
techsupport@bioss.com.cn

400-901-9800

— DATASHEET —

Host: Rabbit	Isotype: IgG	Applications: WB (1:500-2000)
Clonality: Polyclonal		Reactivity: Mouse (predicted: Human, Rat, Rabbit, Pig, Cow, Dog, GuineaPig, Horse)
GeneID: 261726	SWISS: O75663	
Target: TIPRL		Predicted MW.: 31 kDa
Immunogen: KLH conjugated synthetic peptide derived from human TIPRL: 51-150/272.		Subcellular Location: Cytoplasm
Purification: affinity purified by Protein A		
Concentration: 1mg/ml		
Storage: Preservative: 0.02% Proclin300, Constituents: 1% BSA, 0.01M PBS, pH7.4. Shipped at 4°C. Store at -20°C for one year. Avoid repeated freeze/thaw cycles.		
Background: TIPRL is an inhibitory regulator of protein phosphatase-2A (PP2A) (see PPP2CA; MIM 176915), PP4 (see PPP4C; MIM 602035), and PP6 (see PPP6C; MIM 612725) (McConnell et al., 2007 [PubMed 17384681]).[supplied by OMIM, Nov 2010]		

— VALIDATION IMAGES —



Sample: Spleen (Mouse) Lysate at 40 ug Primary:
Anti-TIPRL (bs-19121R) at 1/300 dilution
Secondary: IRDye800CW Goat Anti-Rabbit IgG at
1/20000 dilution Predicted band size: 31 kD
Observed band size: 31 kD