

LPAP Rabbit pAb

Catalog Number: bs-6963R

Target Protein: LPAP

Concentration: 1mg/ml

Form: Liquid

Host: Rabbit

Clonality: Polyclonal

Isotype: IgG

Applications: **Flow-Cyt** (2µg/Test)

Reactivity: Human (predicted: Mouse, Rat, Pig, Sheep, Cow, Dog)

Predicted MW: 23 kDa

Subcellular Cell membrane

Locations:

Entrez Gene: 5790

Swiss Prot: Q14761

Source: KLH conjugated synthetic peptide derived from human LPAP: 125-206/206.

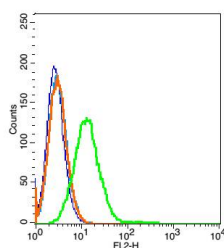
Purification: affinity purified by Protein A

Storage: 0.01M TBS (pH7.4) with 1% BSA, 0.02% Proclin300 and 50% Glycerol.

Shipped at 4°C. Store at -20°C for one year. Avoid repeated freeze/thaw cycles.

Background: Lymphocyte phosphatase-associate Phosphoprotein (LPAP) is a transmembrane phosphoprotein of 32 kD, which is only stable when expressed in the presence of the CD45 glycoprotein. It is expressed on both resting and activated T and B lymphocyte, NK cells and thymocytes. Terminally differentiated plasma cells, granulocytes and monocytes do not express LPAP.

VALIDATION IMAGES



Blank control: Raji(blue). Primary Antibody: Rabbit Anti-LPAP antibody(bs-6963R), Dilution: 5µg in 100 µL 1X PBS containing 0.5% BSA; Isotype Control Antibody: Rabbit IgG (orange) ,used under the same conditions. Secondary Antibody: Goat anti-rabbit IgG-PE(white blue), Dilution: 1:200 in 1 X PBS containing 0.5% BSA.