

**bs-20328R****[ Primary Antibody ]****Bioss**  
ANTIBODIES

www.bioss.com.cn

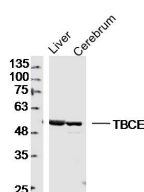
sales@bioss.com.cn

techsupport@bioss.com.cn

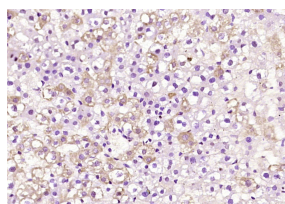
400-901-9800

**TBCE Rabbit pAb****DATASHEET**

<b>Host:</b> Rabbit	<b>Isotype:</b> IgG	<b>Applications:</b> <b>WB</b> (1:500-2000)
<b>Clonality:</b> Polyclonal		<b>IHC-P</b> (1:100-500)
<b>GeneID:</b> 6905	<b>SWISS:</b> Q15813	<b>IHC-F</b> (1:100-500)
<b>Target:</b> TBCE		<b>IF</b> (1:100-500)
<b>Immunogen:</b> KLH conjugated synthetic peptide derived from human TBCE: 1-100/527.		<b>Reactivity:</b> Mouse, Rat (predicted: Human, Rabbit, Cow, Dog)
<b>Purification:</b> affinity purified by Protein A		<b>Predicted MW.:</b> 59 kDa
<b>Concentration:</b> 1mg/ml		<b>Subcellular Location:</b> Cytoplasm
<b>Storage:</b> Preservative: 0.02% Proclin300, Constituents: 1% BSA, 0.01M PBS, pH7.4. Shipped at 4°C. Store at -20°C for one year. Avoid repeated freeze/thaw cycles.		
<b>Background:</b> Microtubules, the primary component of the cytoskeletal network, are highly dynamic structures composed of Alpha/Beta Tubulin heterodimers. Biosynthesis of functional microtubules involve the participation of several chaperones, termed Tubulin folding cofactors A (TBCE), D (TBCE), E (TBCE) and C (TBCE), that act on folding intermediates downstream of the cytosolic chaperon, alternatively named TCP. TBCE (tubulin folding cofactor E), also known as HRD, KCS, KCS1 or pac2, is a 527 amino acid cytoplasmic protein containing one CAP-Gly domain and seven LRR (leucine-rich) repeats. TBCE is involved in the second step of the Tubulin folding pathway and is implicated in the maintenance of the neuronal microtubule network. TBCE associates with microtubules and proteasomes, and protects against misfolded protein stress. Mutations in the gene encoding TBCE are the cause of hypoparathyroidism-retardation-dysmorphism syndrome and Kenny-Caffey syndrome type 1.		

**VALIDATION IMAGES**

Sample: Liver (Mouse)Lysate at 40 ug Cerebrum (Mouse)Lysate at 40 ug  
Primary: Anti-TBCE(bs-20328R)at 1/300 dilution Secondary: IRDye800CW Goat Anti-RabbitIgG at 1/20000 dilution Predicted band size: 59kD Observed band size: 59kD



Paraformaldehyde-fixed, paraffin embedded (rat liver); Antigen retrieval by boiling in sodium citrate buffer (pH6.0) for 15min; Block endogenous peroxidase by 3% hydrogen peroxide for 20 minutes; Blocking buffer (normal goat serum) at 37°C for 30min; Antibody incubation with (TBCE) Polyclonal Antibody, Unconjugated (bs-20328R) at 1:200 overnight at 4°C, followed by operating according to SP Kit(Rabbit) (sp-0023) instructions and DAB staining.