

## HAVCR1 Rabbit pAb

Catalog Number: bs-20843R

Target Protein: HAVCR1

Concentration: 1mg/ml

Form: Liquid

Host: Rabbit

Clonality: Polyclonal

Isotype: IgG

Applications: WB (1:500-2000)

Reactivity: Human, Mouse, Rat

Predicted MW: 39 kDa

Entrez Gene: 171283

Swiss Prot: Q5QNS5

Source: KLH conjugated synthetic peptide derived from mouse HAVCR1c/TIM 1: 161-250/359.

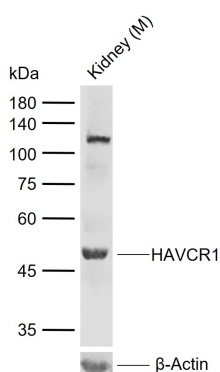
Purification: affinity purified by Protein A

Storage: Preservative: 0.02% Proclin300, Constituents: 1% BSA, 0.01M PBS, pH7.4.

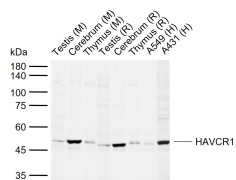
Shipped at 4°C. Store at -20°C for one year. Avoid repeated freeze/thaw cycles.

**Background:** The protein encoded by this gene is a membrane receptor for both human hepatitis A virus (HHAV) and TIMD4. The encoded protein may be involved in the moderation of asthma and allergic diseases. The reference genome represents an allele that retains a MTTVP amino acid segment that confers protection against atopy in HHAV seropositive individuals. Three transcript variants encoding the same protein have been found for this gene. [provided by RefSeq]

### VALIDATION IMAGES



Sample: Lane 1: Mouse Kidney tissue lysates Primary: Anti-HAVCR1 (bs-20843R) at 1/1000 dilution Secondary: IRDye800CW Goat Anti-Rabbit IgG at 1/20000 dilution Predicted band size: 39 kDa Observed band size: 50 kDa



Sample: Lane 1: Mouse Testis tissue lysates Lane 2: Mouse Cerebrum tissue lysates Lane 3: Mouse Thymus tissue lysates Lane 4: Rat Testis tissue lysates Lane 5: Rat Cerebrum tissue lysates Lane 6: Rat Thymus tissue lysates Lane 7: Human A549 cell lysates Lane 8: Human A431 cell lysates Primary: Anti-HAVCR1 (bs-20843R) at 1/500 dilution Secondary: IRDye800CW Goat Anti-Rabbit IgG at 1/20000 dilution Predicted band size: 39 kDa Observed band size: 50 kDa