

bs-20469R**[Primary Antibody]****IRX1 Rabbit pAb****BioSS**
ANTIBODIES

www.bioss.com.cn

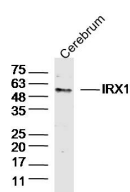
sales@bioss.com.cn

techsupport@bioss.com.cn

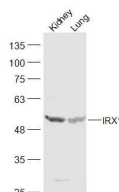
400-901-9800

— DATASHEET —

Host: Rabbit Clonality: Polyclonal GeneID: 79192 Target: IRX1 Immunogen: KLH conjugated synthetic peptide derived from human IRX1: 401-480/480. Purification: affinity purified by Protein A Concentration: 1mg/ml Storage: Preservative: 0.02% Proclin300, Constituents: 1% BSA, 0.01M PBS, pH7.4. Shipped at 4°C. Store at -20°C for one year. Avoid repeated freeze/thaw cycles. Background: The Iroquois homeobox gene family of transcription factors regulate aspects of embryonic development including anterior/posterior and dorsal/ventral axis patterning in the central nervous system. The Iroquois family are clustered on two loci, IRXA and IRXB, which map to chromosomes 8 and 13 in mice. The IRXA group includes <i>Irx1</i> , <i>Irx2</i> and <i>Irx4</i> ; the IRXB group is comprised of <i>Irx3</i> , <i>Irx5</i> and <i>Irx6</i> . <i>Irx1</i> and <i>Irx2</i> are both widely expressed during development in the lung epithelium and also in the ventricular septum. <i>Irx1</i> and <i>Irx2</i> also play a role in digit formation (E11.5–E14.5). The <i>Irx</i> gene family members are each expressed in a distinct pattern during mouse heart development. Specifically, <i>Irx1</i> and <i>Irx2</i> are expressed in the ventricular septum and <i>Irx3</i> is expressed in the ventricular trabeculated myocardium. In addition, <i>Irx4</i> is expressed in the linear heart tube and the AV canal; <i>Irx5</i> is expressed in the endocardium lining the ventricular and atrial myocardium. Furthermore, the <i>IRX4</i> gene may modulate cardiac development and function. Although the heart of <i>Irx4</i> (-) mice appears to develop normally, adult <i>Irx4</i> (-) mice exhibit cardiomyopathy, including cardiac hypertrophy and decreased contractility.	Isotype: IgG SWISS: P78414 Applications: WB (1:500-2000) Reactivity: Mouse (predicted: Human, Rat, Rabbit, Cow, Chicken, Horse) Predicted MW.: 50 kDa Subcellular Location: Nucleus
---	--

— VALIDATION IMAGES —

Sample: Cerebrum (Mouse) Lysate at 40 ug
Primary: Anti-IRX1(bs-20469R) at 1/300 dilution
Secondary: IRDye800CW Goat Anti-Rabbit IgG at 1/20000 dilution
Predicted band size: 50kD
Observed band size: 50kD



Sample: Kidney (Mouse) Lysate at 40 ug Lung (Mouse) Lysate at 40 ug
Primary: Anti-IRX1 (bs-20469R) at 1/300 dilution
Secondary: IRDye800CW Goat Anti-Rabbit IgG at 1/20000 dilution
Predicted band size: 50 kD
Observed band size: 50 kD