

bs-5791R**[Primary Antibody]****Integrin Alpha V + Beta 6 Rabbit pAb****Bioss**
ANTIBODIES

www.bioss.com.cn

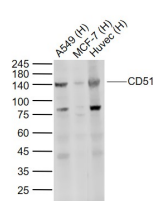
sales@bioss.com.cn

techsupport@bioss.com.cn

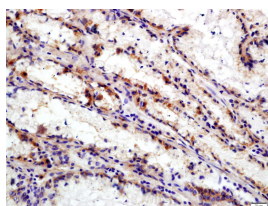
400-901-9800

— DATASHEET —

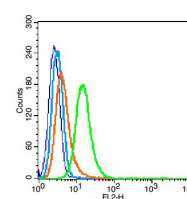
Host: Rabbit	Isotype: IgG	Applications: WB (1:1000-10000) IHC-P (1:100-500) IHC-F (1:100-500) IF (1:100-500) Flow-Cyt (1µg/Test) ICC/IF (1:100) Reactivity: Human (predicted: Mouse, Rat, Pig, Cow, Chicken, Dog, Horse) Predicted MW.: 18/95/113 kDa Subcellular Location: Cell membrane
Clonality: Polyclonal		
GeneID: 3685	SWISS: P06756	
Target: Integrin Alpha V + Beta 6		
Purification: affinity purified by Protein A		
Concentration: 1mg/ml		
Storage: 0.01M TBS (pH7.4) with 1% BSA, 0.02% Proclin300 and 50% Glycerol. Shipped at 4°C. Store at -20°C for one year. Avoid repeated freeze/thaw cycles.		
Background: Integrins are heterodimeric proteins made up of alpha and beta subunits. At least 18 alpha and 8 beta subunits have been described in mammals. Integrin family members are membrane receptors involved in cell adhesion and recognition in a variety of processes including embryogenesis, hemostasis, tissue repair, immune response and metastatic diffusion of tumour cells. ITAGV encodes integrin alpha chain V. Integrins are heterodimeric integral membrane proteins composed of an alpha chain and a beta chain. The I-domain containing integrin alpha V undergoes post-translational cleavage to yield disulfide-linked heavy and light chains, that combine with multiple integrin beta chains to form different integrins. Among the known associating beta chains (beta chains 1,3,5,6, and 8; ITGB1, ITGB3, ITGB5, ITGB6, and ITGB8), each can interact with extracellular matrix ligands; the alpha V beta 3 integrin, perhaps the most studied of these, is referred to as the Vitronectin receptor (VNR). In addition to adhesion, many integrins are known to facilitate signal transduction.		

— VALIDATION IMAGES —

Sample: Lane 1: A549 (Human) Cell Lysate at 30 ug
 Lane 2: MCF-7 (Human) Cell Lysate at 30 ug
 Lane 3: Huvec (Human) Cell Lysate at 30 ug
 Primary: Anti-CD51 (bs-5791R) at 1/1000 dilution
 Secondary: IRDye800CW Goat Anti-Rabbit IgG at 1/20000 dilution
 Predicted band size: 125-140 kD
 Observed band size: 140 kD



Tissue/cell: human gastric carcinoma; 4% Paraformaldehyde-fixed and paraffin-embedded; Antigen retrieval: citrate buffer (0.01M, pH 6.0), Boiling bathing for 15min; Block endogenous peroxidase by 3% Hydrogen peroxide for 30min; Blocking buffer (normal goat serum, C-0005) at 37°C for 20 min; Incubation: Anti-Integrin Alpha V+Beta 6 Polyclonal Antibody, Unconjugated(bs-5791R) 1:200, overnight at 4°C, followed by conjugation to the secondary antibody(SP-0023) and DAB(C-0010) staining



Blank control(blue): Hela (fixed with 2% paraformaldehyde (10 min), then permeabilized with 90% ice-cold methanol for 30 min on ice).
 Primary Antibody: Rabbit Anti-Integrin Alpha V + Beta 6 antibody(bs-5791R), Dilution: 1µg in 100 µL 1X PBS containing 0.5% BSA; Isotype Control Antibody: Rabbit IgG(orange), used under the same conditions; Secondary Antibody: Goat anti-rabbit IgG-PE(white blue), Dilution: 1:200 in 1X PBS containing 0.5% BSA.

— SELECTED CITATIONS —

- **[IF=12.121]** Gehua Zhen. et al. Mechanical stress determines the configuration of TGFβ activation in articular cartilage. Nat Commun. 2021 Mar;12(1):1-16 IHC ;Mouse. 33731712

Important Note: This product as supplied is intended for research use only, not for use in human, therapeutic or diagnostic applications.

- **[IF=8.31]** Gao, Duo, et al. "A near-infrared phthalocyanine dye-labeled agent for integrin $\alpha v\beta 6$ -targeted theranostics of pancreatic cancer." *Biomaterials* 53 (2015):229-238. IHC ;="Human". 25890722
- **[IF=6.8]** Xiaojun Zhang. et al. Design, Synthesis, and Biological Evaluation of [^{18}F]AlF-Labeled Integrin $\alpha v\beta 6$ -Targeting Tracers for Pancreatic Cancer Imaging. *J MED CHEM.* 2025;68(13):14028–14040 WB,IHC ;Mouse,Human. 40580128
- **[IF=7.4]** Liangtao Ye. et al. The inhibition of YAP Signaling Prevents Chronic Biliary Fibrosis in the *Abcb4*^{-/-} Model by Modulation of Hepatic Stellate Cell and Bile Duct Epithelium Cell Pathophysiology. *AGING DIS.* 2024 Feb 1; 15(1): 338–356 WB ;Human. 37307826
- **[IF=6.208]** Elena Andreucci. et al. Nintedanib- $\alpha v\beta 6$ Integrin Ligand Conjugates Reduce TGF β -Induced EMT in Human Non-Small Cell Lung Cancer. *INT J MOL SCI.* 2023 Jan;24(2):1475 IF ;Human. 36674990