

bs-5802R**[Primary Antibody]****Caspase 2 Rabbit pAb****Bioss**
ANTIBODIES

www.bioss.com.cn

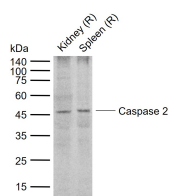
sales@bioss.com.cn

techsupport@bioss.com.cn

400-901-9800

— DATASHEET —

Host: Rabbit	Isotype: IgG	Applications: WB (1:500-2000)
Clonality: Polyclonal		Reactivity: Rat (predicted: Human, Mouse, Rabbit, Pig, Cow, Horse)
GeneID: 835	SWISS: P42575	Predicted MW.: 18/51 kDa
Target: Caspase 2		Subcellular Location: Cytoplasm ,Nucleus
Immunogen: KLH conjugated synthetic peptide derived from human Caspase-2 subunit p18: 251-350/452.		
Purification: affinity purified by Protein A		
Concentration: 1mg/ml		
Storage: 0.01M TBS (pH7.4) with 1% BSA, 0.02% Proclin300 and 50% Glycerol. Shipped at 4°C. Store at -20°C for one year. Avoid repeated freeze/thaw cycles.		
Background: This gene encodes a member of the cysteine-aspartic acid protease (caspase) family. Caspases mediate cellular apoptosis through the proteolytic cleavage of specific protein substrates. The encoded protein may function in stress-induced cell death pathways, cell cycle maintenance, and the suppression of tumorigenesis. Increased expression of this gene may play a role in neurodegenerative disorders including Alzheimer's disease, Huntington's disease and temporal lobe epilepsy. Alternatively spliced transcript variants encoding multiple isoforms have been observed for this gene. [provided by RefSeq, Jan 2011]		

— VALIDATION IMAGES —

Sample: Lane 1: Rat Kidney tissue lysates Lane 2:
Rat Spleen tissue lysates Primary: Anti-Caspase 2
(bs-5802R) at 1/1000 dilution Secondary:
IRDye800CW Goat Anti-Rabbit IgG at 1/20000
dilution Predicted band size: 18/51 kDa
Observed band size: 47 kDa

— SELECTED CITATIONS —

- **[IF=3.547]** You XG et al. Phenylephrine Induces Necroptosis and Apoptosis in Corneal Epithelial Cells Dose-and Time-Dependently. Toxicology. 2019 Oct 9;428:152305. ELISA ;Human. 31605733