

bs-10188R**[Primary Antibody]****BioSS**
ANTIBODIES

www.bioss.com.cn

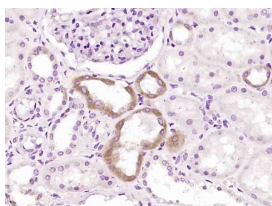
sales@bioss.com.cn

techsupport@bioss.com.cn

400-901-9800

Endothelial lipase Rabbit pAb**— DATASHEET —**

| | | |
|---|----------------------|--|
| Host: Rabbit | Isotype: IgG | Applications: IHC-P (1:100-500) |
| Clonality: Polyclonal | | IHC-F (1:100-500) |
| GeneID: 9388 | SWISS: Q9Y5X9 | IF (1:100-500) |
| Target: Endothelial lipase | | Reactivity: Human |
| Purification: affinity purified by Protein A | | |
| Concentration: 1mg/ml | | Predicted MW.: 55 kDa |
| Storage: 0.01M TBS (pH7.4) with 1% BSA, 0.02% Proclin300 and 50% Glycerol. Shipped at 4°C. Store at -20°C for one year. Avoid repeated freeze/thaw cycles. | | Subcellular Location: Secreted ,Nucleus |
| Background: The protein encoded by this gene has substantial phospholipase activity and may be involved in lipoprotein metabolism and vascular biology. This protein is designated a member of the TG lipase family by its sequence and characteristic lid region which provides substrate specificity for enzymes of the TG lipase family. [provided by RefSeq, Jul 2008] | | |

— VALIDATION IMAGES —

Paraformaldehyde-fixed, paraffin embedded (Human kidney); Antigen retrieval by boiling in sodium citrate buffer (pH6.0) for 15min; Block endogenous peroxidase by 3% hydrogen peroxide for 20 minutes; Blocking buffer (normal goat serum) at 37°C for 30min; Antibody incubation with (Endothelial lipase) Polyclonal Antibody, Unconjugated (bs-10188R) at 1:200 overnight at 4°C, followed by operating according to SP Kit(Rabbit) (sp-0023) instructions and DAB staining.

— SELECTED CITATIONS —

- **[IF=5.6]** Paweł Jan Stanirowski. et al. Expression of Placental Lipid Transporters in Pregnancies Complicated by Gestational and Type 1 Diabetes Mellitus. INT J MOL SCI. 2024 Jan;25(6):3559 IHC ;Human. 38542532