

bsm-33175M

[Primary Antibody]

mStrawberry Mouse mAb

Bioss
ANTIBODIES

www.bioss.com.cn

sales@bioss.com.cn

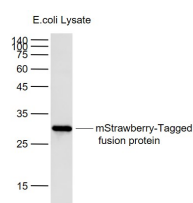
techsupport@bioss.com.cn

400-901-9800

— DATASHEET —

Host: Mouse	Isotype: IgG	Applications: WB (1:1000-5000) Reactivity: Species independent
Clonality: Monoclonal	CloneNo.: 6C8	
Target: mStrawberry		
Purification: affinity purified by Protein G		
Concentration: 1mg/ml		
Storage: Size : 50ul/100ul/200ul 0.01M TBS (pH7.4) with 1% BSA, 0.02% Proclin300 and 50% Glycerol. Size : 200ug (PBS only) 0.01M PBS Shipped at 4°C. Store at -20°C for one year. Avoid repeated freeze/thaw cycles.		

— VALIDATION IMAGES —



Sample: Lane 1: mStrawberry-Tagged fusion protein (full length) Overexpression E.coli Lysate (Cat#: bs-33175P) at 4 ug Primary: Anti-mStrawberry-Tag (bsm-33175M) at 1/1000 dilution Secondary: IRDye800CW Goat Anti-Mouse IgG at 1/20000 dilution Predicted band size: 26 kD Observed band size: 26 kD