

Dlx5 Rabbit pAb

Catalog Number: bs-6974R

Target Protein: Dlx5

Concentration: 1mg/ml

Form: Liquid

Host: Rabbit

Clonality: Polyclonal

Isotype: IgG

Applications: IHC-P (1:100-500), IHC-F (1:100-500), IF (1:50-200)

Reactivity: Rat (predicted:Human, Mouse, Rabbit, Pig, Sheep, Cow, Chicken, Horse)

Predicted MW: 31 kDa

Entrez Gene: 1749

Swiss Prot: P56178

Source: KLH conjugated synthetic peptide derived from human Dlx5: 101-200/289.

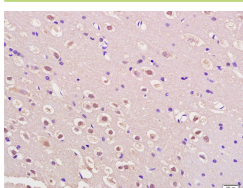
Purification: affinity purified by Protein A

Storage: 0.01M TBS (pH7.4) with 1% BSA, 0.02% Proclin300 and 50% Glycerol.

Shipped at 4°C. Store at -20°C for one year. Avoid repeated freeze/thaw cycles.

Background: Dlx5 (distal-less homeobox 5) gene is a member of a homeobox gene family similar to the Drosophila distal-less gene. The encoded Dlx5 protein is localized to the nucleus where it functions as a transcriptional regulator during neural development. In the developing CNS, Dlx5 is one of the earliest known markers before the formation of an overt neural plate. During late gastrulation Dlx5 (gene) expression becomes localized to the anterior neural ridge, which defines the rostral boundary of the neural plate, and also extends caudolaterally, marking the region of the presumptive neural crest. Subsequently, Dlx5 is expressed in tissues (olfactory epithelium, ventral cephalic epithelium) that are believed to derive from the anterior neural ridge.

VALIDATION IMAGES



Tissue/cell: rat brain tissue; 4% Paraformaldehyde-fixed and paraffin-embedded; Antigen retrieval: citrate buffer (0.01M, pH 6.0), Boiling bathing for 15min; Block endogenous peroxidase by 3% Hydrogen peroxide for 30min; Blocking buffer (normal goat serum, C-0005) at 37°C for 20 min; Incubation: Anti-Dlx5 Polyclonal Antibody, Unconjugated(bs-6974R) 1:200, overnight at 4°C, followed by conjugation to the secondary antibody(SP-0023) and DAB(C-0010) staining